

# Lead & Copper Mapping Project

PWS Name: Kenston Intermediate School

PWS #: OH 2844612

Year Built: 1967

Service Line Material: Non-Lead

Buildings built prior to 1998 or that use plumbing material or solder manufactured before 1998 may have materials with greater than 8% lead and are at a higher risk of contributing lead to the drinking water than materials manufactured after 1998. In addition, buildings built and plumbing materials manufactured after 2014 were required to have less than 0.25% lead by weight and have the lowest risk for contributing lead to the drinking water. It should be noted however that, although prohibited, some use of leaded solder or leaded components may have occurred after the prohibitions became effective.

If you have any questions, please contact:

Clearwater Operations & Maintenance

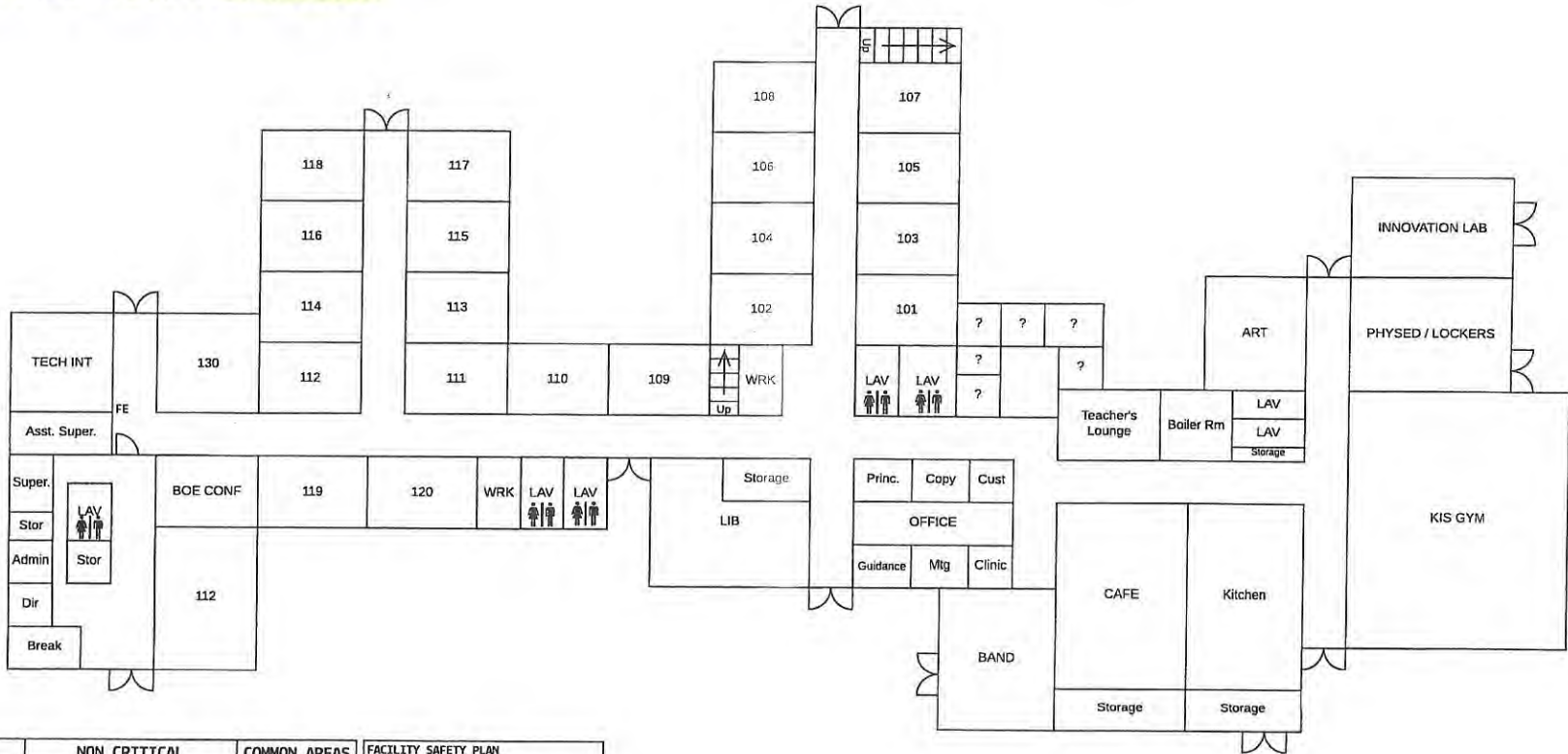
10180 Queens Way #3

Chagrin Falls, OH 44023

440-708-0266

[clearwater@clearwaterops.com](mailto:clearwater@clearwaterops.com)

KENSTON INTERMEDIATE SCHOOL / 1ST FLOOR



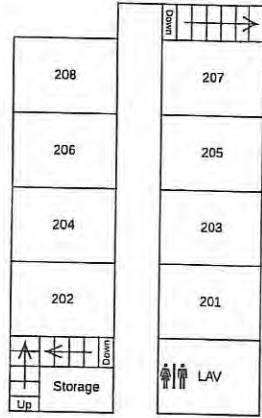
CRITICAL	NON CRITICAL	COMMON AREAS	FACILITY SAFETY PLAN KENSTON LOCAL SCHOOLS KENSTON INTERMEDIATE SCHOOL IRN: 7777 Building Phone: (440) 563-7777 Emergency Phone: (440) xxx-xxxx
(AED) EXISTING AED	(A) ADMINISTRATIVE SUITE	(DN) DINING	
(E) ELECTRICAL SHUTOFF	(R) AREA OF REFUGE	(GM) GYMNASIUM	
(F) FIRE ALARM PANEL	(E) ELEVATOR	(ME) MEDIA	
(G) GAS SHUTOFF	(P) LOCATION OF BLUEPRINTS	(ST) STAGE	
(K) KNOX BOX	(RA) ROOF ACCESS POINT		
(S) SPRINKLER SHUTOFF	(SM) SECURITY MONITORING & ACCESS CONTROL		
(W) WATER SHUTOFF	FE FIRE EXTINGUISHER		
	DR # EXTERIOR DOOR #		
	SE # SERVICE ENTRANCE		
	△ CAMERA		

1967



# KENSTON INTERMEDIATE SCHOOL / 2ND FLOOR

<b>CRITICAL</b>	(AED) LOCATION OF EXISTING AED
	(E) ELECTRICAL SHUTOFF
	(F) FIRE ALARM PANEL
	(G) GAS SHUTOFF
	(K) KNOX BOX
	(S) SPRINKLER SHUTOFF
	(W) WATER SHUTOFF
<b>NON CRITICAL</b>	(A) ADMINISTRATIVE SUITE
	(R) AREA OF REFUGE
	(E) ELEVATOR
	(P) LOCATION OF BLUEPRINTS
	(RA) ROOF ACCESS POINT
	(SM) SECURITY MONITORING & ACCESS CONTROL
	FE FIRE EXTINGUISHER
	DR # EXTERIOR DOOR #
	SE # SERVICE ENTRANCE
	△ CAMERA
<b>COMMON AREAS</b>	(DN) DINING
	(GM) GYMNASIUM
	(ME) MEDIA
	(ST) STAGE
<b>FACILITY SAFETY PLAN</b> KENSTON LOCAL SCHOOLS KENSTON INTERMEDIATE SCHOOL  IRN: 7777 Building Phone: (440) 543-7777 Emergency Phone: (440) xxx-xxxx	





Kenston  
Intermediate  
School



Geauga REALink



Geauga County GIS

Frank J. Gliha, Geauga County Auditor  
Joe Cattell, Geauga County Engineer PE, PS



1 Inch = 51.58 Feet | Scale: 619

This tax map was prepared by Geauga County GIS in accordance with Section 5713.09 of the O.R.C. Geauga County digital data is a representation of recorder plats, surveys, deeds, and other collected information for use within the Geographic Information System for purposes of public access and analysis. These and other digital data do not replace or modify land surveys, deeds, and/or other legal instruments defining land ownership or use. Geauga County assumes no legal responsibility for this information.

[www.auditor.co.geauga.oh.us](http://www.auditor.co.geauga.oh.us)

February 22, 2017