

Lead & Copper Mapping Project

PWS Name: Great Lakes Cheese

PWS #: OH 2866812

Year Built: 1998

Service Line Material: Non-Lead

Buildings built prior to 1998 or that use plumbing material or solder manufactured before 1998 may have materials with greater than 8% lead and are at a higher risk of contributing lead to the drinking water than materials manufactured after 1998. In addition, buildings built and plumbing materials manufactured after 2014 were required to have less than 0.25% lead by weight and have the lowest risk for contributing lead to the drinking water. It should be noted however that, although prohibited, some use of leaded solder or leaded components may have occurred after the prohibitions became effective.

If you have any questions, please contact:

Clearwater Operations & Maintenance
10180 Queens Way #3
Chagrin Falls, OH 44023
440-708-0266
clearwater@clearwaterops.com



Geauga REALink

Frank J. Gliha, Geauga County Auditor
Joe Cattell, Geauga County Engineer PE, PS



Geauga County GIS

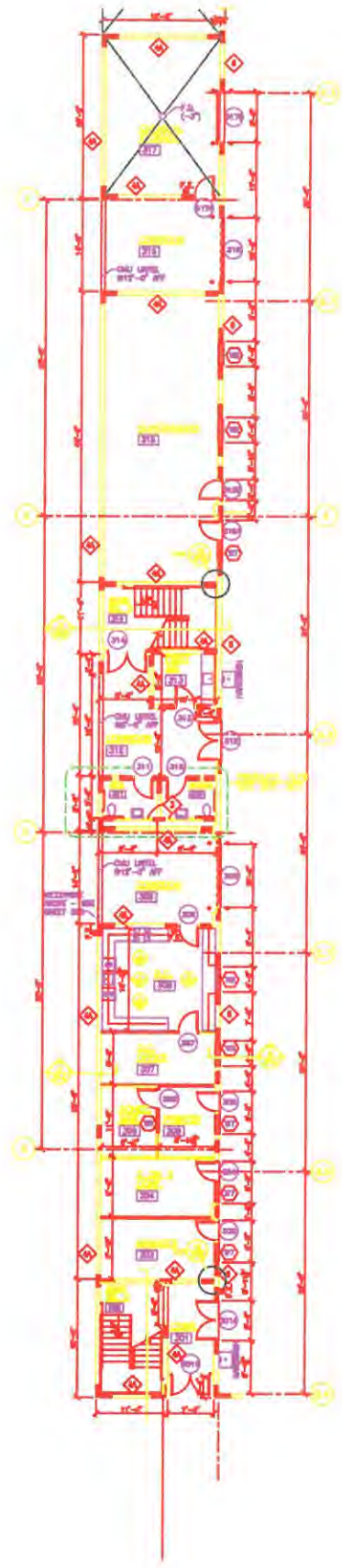
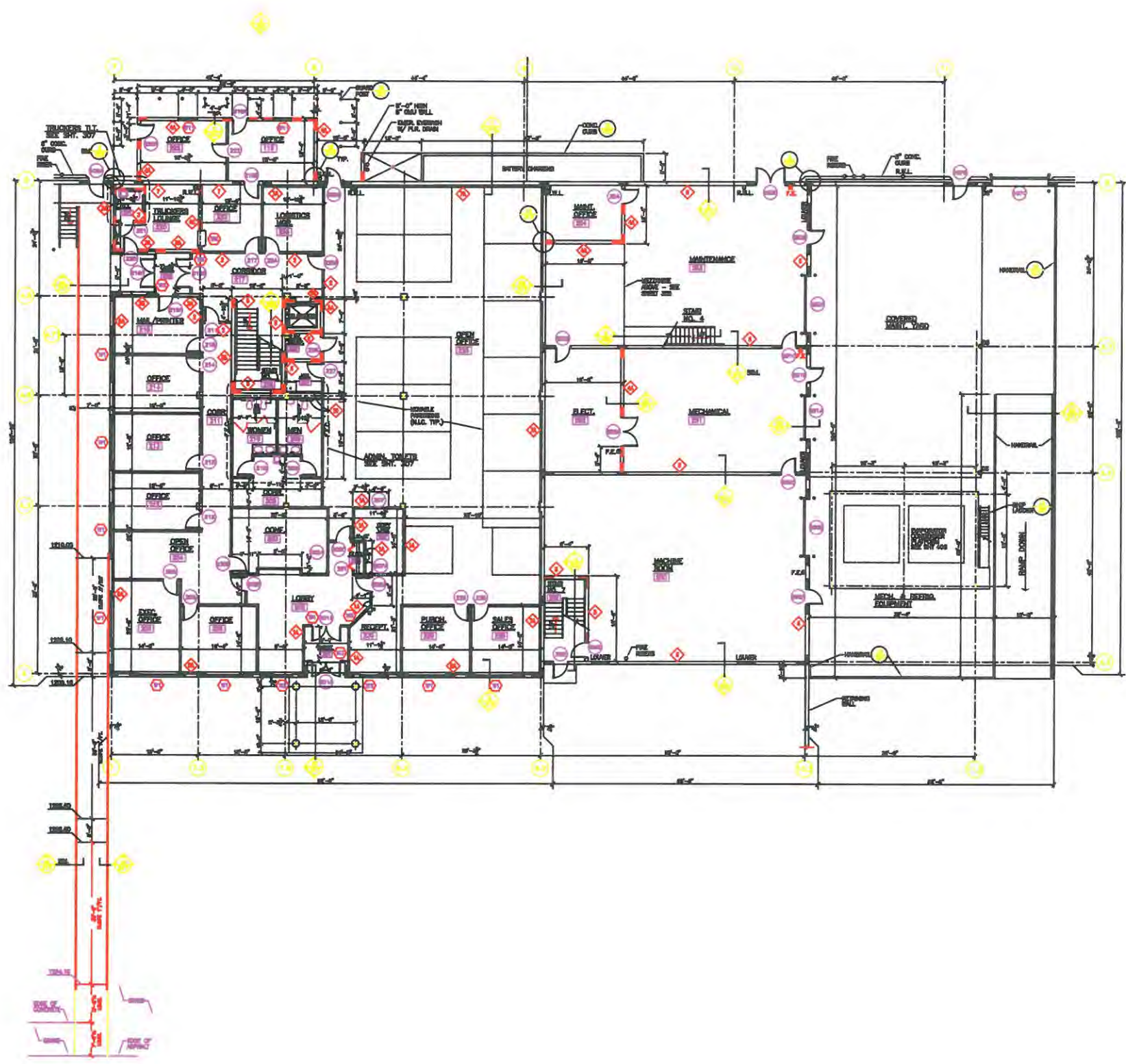


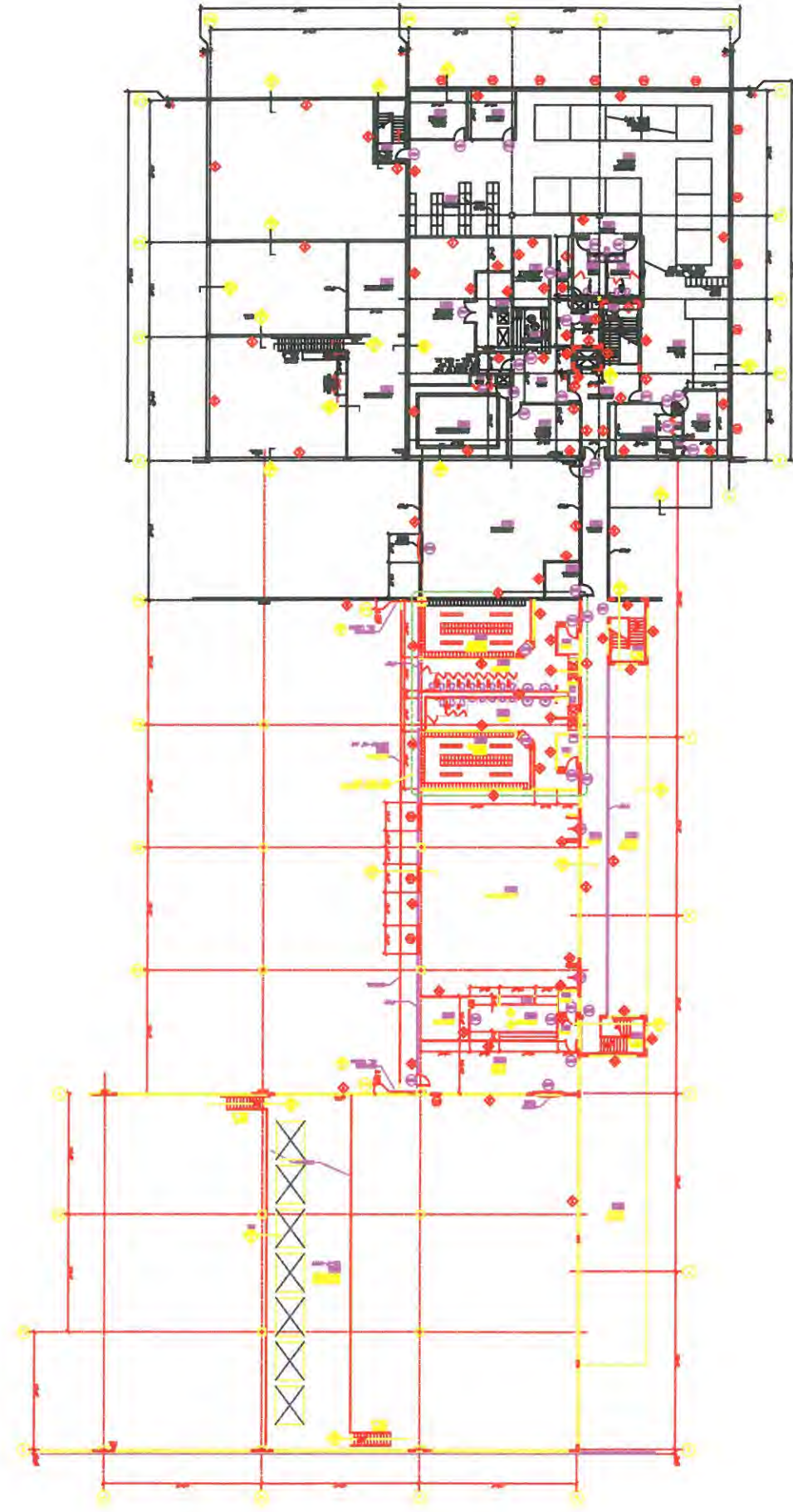
1 Inch = 216.42 Feet | Scale: 2,597

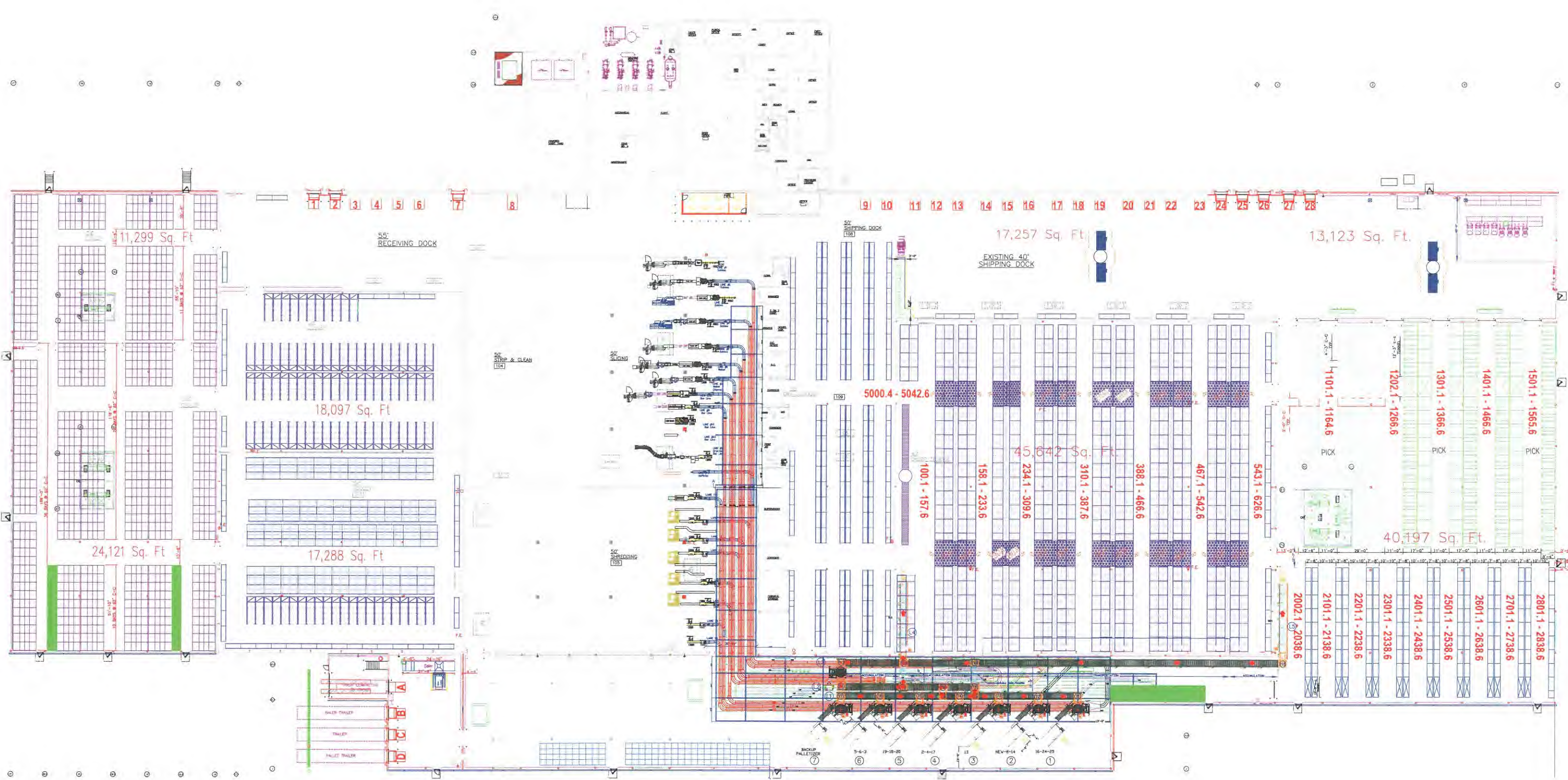
This tax map was prepared by Geauga County GIS in accordance with Section 5713.09 of the O.R.C. Geauga County digital data is a representation of recorder plats, surveys, deeds, and other collected information for use within the Geographic Information System for purposes of public access and analysis. These and other digital data do not replace or modify land surveys, deeds, and/or other legal instruments defining land ownership or use. Geauga County assumes no legal responsibility for this information.

www.auditor.co.geauga.oh.us

February 22, 2017







11,299 Sq. Ft.

55' RECEIVING DOCK

17,257 Sq. Ft.

EXISTING 40' SHIPPING DOCK

13,123 Sq. Ft.

18,097 Sq. Ft.

NO STRIP & CLEAN 104

5000.4 - 5042.6

45,642 Sq. Ft.

40,197 Sq. Ft.

24,121 Sq. Ft.

17,288 Sq. Ft.

100.1 - 157.6

158.1 - 233.6

234.1 - 309.6

310.1 - 387.6

388.1 - 466.6

467.1 - 542.6

543.1 - 626.6

1101.1 - 1164.6

1202.1 - 1266.6

1301.1 - 1366.6

1401.1 - 1466.6

1501.1 - 1565.6

2002.1 - 2038.6

2101.1 - 2138.6

2201.1 - 2238.6

2301.1 - 2338.6

2401.1 - 2438.6

2501.1 - 2538.6

2601.1 - 2638.6

2701.1 - 2738.6

2801.1 - 2838.6

TRAILER

TRAILER

PALLET TRAILER

BACKUP PALLETIZER

3-6-3

19-18-20

2-4-17

11

NEW 9-14

10-24-25

PICK

PICK

PICK