

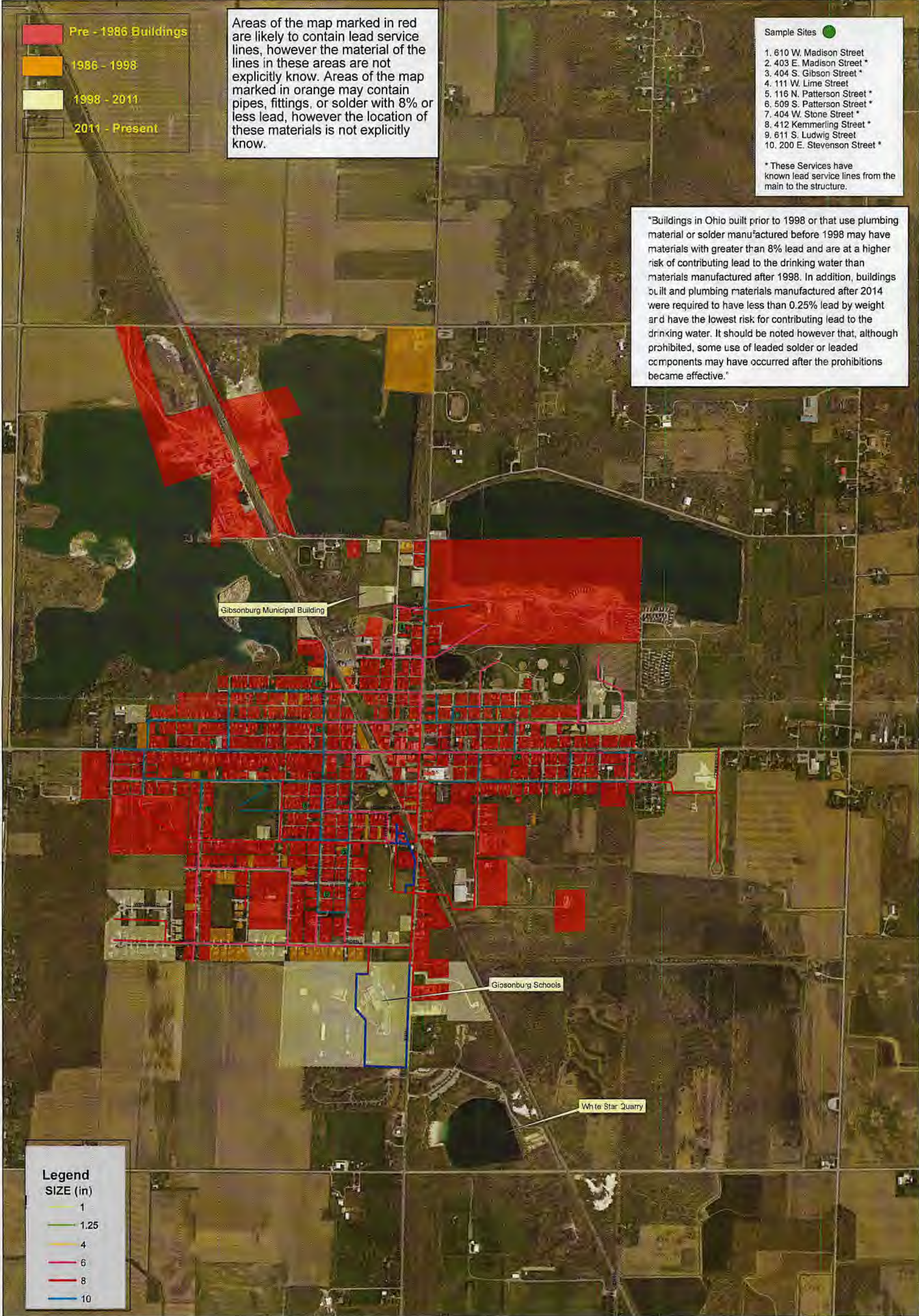
RE: Gibsonburg Village PWS  
Report  
Lead Mapping  
Drinking Water Program  
Sandusky County  
PWS ID: OH7200412

- Pre - 1986 Buildings
- 1986 - 1998
- 1998 - 2011
- 2011 - Present

Areas of the map marked in red are likely to contain lead service lines, however the material of the lines in these areas are not explicitly know. Areas of the map marked in orange may contain pipes, fittings, or solder with 8% or less lead, however the location of these materials is not explicitly know.

- Sample Sites ●
1. 610 W. Madison Street
  2. 403 E. Madison Street \*
  3. 404 S. Gibson Street \*
  4. 111 W. Lime Street
  5. 116 N. Patterson Street \*
  6. 509 S. Patterson Street \*
  7. 404 W. Stone Street \*
  8. 412 Kemmerling Street \*
  9. 611 S. Ludwig Street
  10. 200 E. Stevenson Street \*
- \* These Services have known lead service lines from the main to the structure.

"Buildings in Ohio built prior to 1998 or that use plumbing material or solder manufactured before 1998 may have materials with greater than 8% lead and are at a higher risk of contributing lead to the drinking water than materials manufactured after 1998. In addition, buildings built and plumbing materials manufactured after 2014 were required to have less than 0.25% lead by weight and have the lowest risk for contributing lead to the drinking water. It should be noted however that, although prohibited, some use of leaded solder or leaded components may have occurred after the prohibitions became effective."



- Legend**  
SIZE (in)
- 1
  - 1.25
  - 4
  - 6
  - 8
  - 10

0 500 1,000 2,000 Feet

Village of Gibsonburg Distribution System  
Lead and Copper Mapping HB-512  
PWS # OH7200412

Document Path: S:\193000\00102\Copper and Lead map.mxd



"Disclaimer: Structure Age shown is from data provided by the County."

