

RECEIVED

MAY 24 2017

# VILLAGE OF MINGO JUNCTION

Ohio Environmental  
Protection Agency  
Southeast District

## PUBLIC WATER SYSTEM LEAD (Pb) COMPONENTS

PWSID# OH 4101612

To comply with section 6109.21 of the Ohio Revised Code, enacted in September of 2016, the Village of Mingo Junction in Jefferson County has created the following report and attached maps to identify known and potential components of water service lines containing lead.

The maps and information provided do not verify the presence of lead in any of the plumbing components of the individual structures, but show the probability of lead being present in regards to the year when the structures were built and the interior plumbing installed.

The Village of Mingo junction has 1645 structures within the distribution system. There have been 3 new structures built since 2014 and another 12 since 1998. The remaining 1630 built prior to 1998 have a higher probability of having components containing greater than 0.25% lead as prescribed by new regulations. The Village of Mingo Junction has no known lead supply lines in the distribution system and removes any lead service lines found during any type of water line work being done.

### Public and private ownership of service lines

The Village is responsible for the service lines from the water distribution mains up to the curb stops of each structure the property owner is responsible for the service line to the meter and all interior plumbing. The Village uses remote read meters on 90% of the distribution system and a combination of radio reads, meter pits and direct read meters. This allows for limited inspection of interior plumbing components and service line components.

The table below provides information about the possibility of lead being present in the service line materials in the Village of Mingo Junction distribution system.

PUBLIC SERVICE LINE LEAD PROBABILITY

Possibility of Lead	Public Lines #	% Of System
Non Lead	15	1 %
Moderate Probability	1480	90%
Not Enough Information	150	9%

Probability based on structures built prior to 1998.

## Distribution System

There are no main line pipes containing lead in the Village of Mingo Junction distribution system; however some of the joints, valves, and fittings in the system may contain lead on some of the older lines. In 2001 the Village started a meter replacement program to go to the remote read meters, the new meters used a composite base instead of a metallic base at the time of the installation any lead service lines found were replaced with plastic or copper service lines. The table below shows the information on the property owner side of the service lines.

### Property owner lines lead probability

Possibility of Lead	Private #	% of System
Non Lead	1575	96%
Not Enough Information	70	4%

## Interior Plumbing

Structures in Ohio built before 1998 or that used plumbing materials or solder manufactured before 1998 may have materials containing greater than 8% lead and are at a higher probability of contributing lead to the drinking water than components manufactured after 1998.

Structures built and plumbing materials manufactured after 2014 were required to have less than 0.25% lead by weight and have a lower probability for contributing lead to the drinking water. The use of components containing lead after the 2014 prohibition is a possibility and should be remediated if discovered in the distribution system.

### Property Owner Involvement

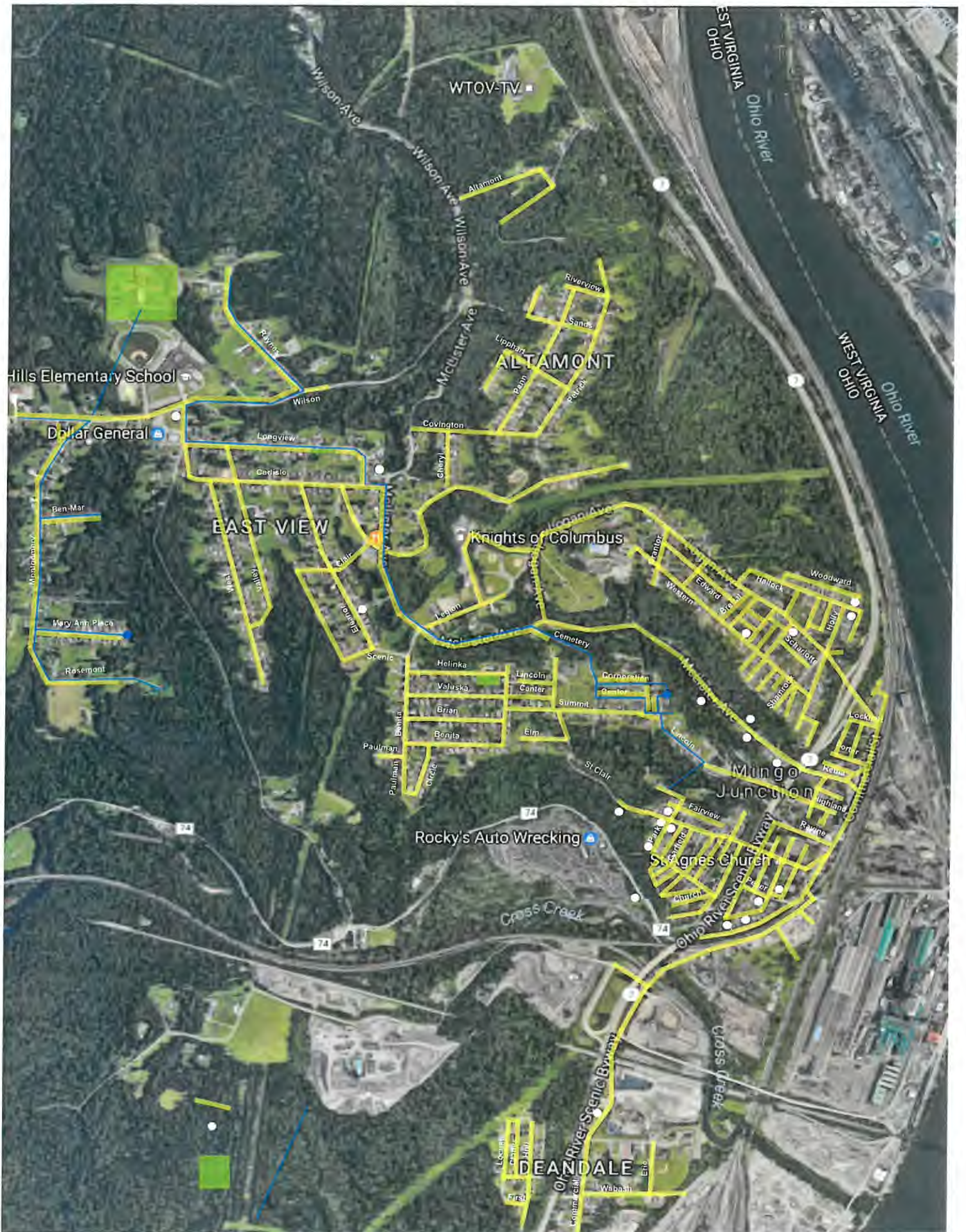
The information provided in this report is based on the knowledge of Village of Mingo Junction water department personnel, records on water line repairs and installations and the meter replacement program records. The property owners in the distribution system should inspect the service line in their properties and if they have any concerns contact the water department at 740-535-9162 and have any concerns addressed as soon as possible. The Village of Mingo Junction Water department will update the lead component probability map every 5 years and are working on making it available on the Village web site in the near future.

## Contacts and Resource Links

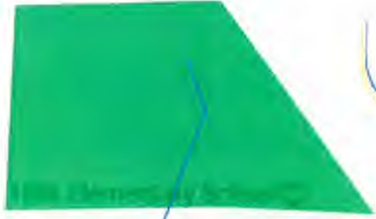
For assistance or questions about lead components in the plumbing of structures in the Mingo Junction water system contact the Water Department at 740-535-9162 or written correspondence to The Village of Mingo Junction Water Dept., 501 Commercial Street, Mingo Junction, Ohio 43938. The Village web site at [www.mingojct.us](http://www.mingojct.us)

For more information on lead service lines and their removal, we recommend the following resources:

- **OHIO EPA 'Learn About Lead' page** <http://epa.ohio.gov/pic/lead.aspx>
- **US EPA Lead in Drinking Water Information Page** <https://www.epa.gov/ground-water-and-drinking-water/basic-information-about-lead-drinking-water>



WTOV-TV



**Colors**

Lead = ■

Non-Lead = ■

TIER 1 SITES = ●

Water Mains = —