

RE: Countryside Water Association
Report
Lead Mapping
Drinking Water Program
Richland County
PWS ID: OH7000712

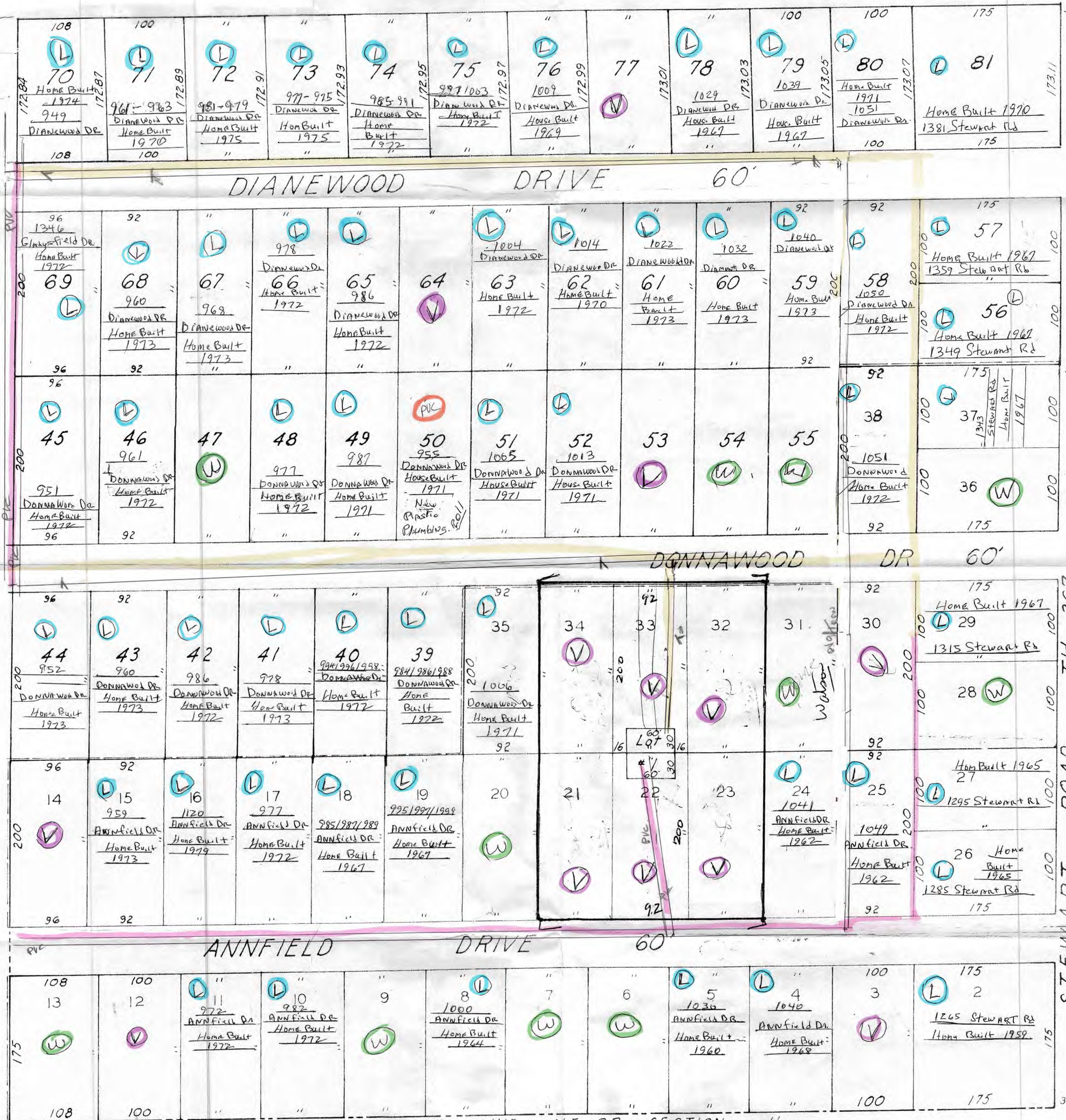
COUNTRYSIDE WATER ASSOCIATION
 PWSID: 7000712
 Mapping Lead Plumbing CWA Homes

Countryside Allot Water Assoc
 960 Donnawood Dr
 Mansfield, OH 44903

RECEIVED
 MAY 16 2017
 DDAGW - NWDO

419-589-2086
 Kenneth D. Long - Operator - 1082607

buildings in Ohio built prior to 1998 or that use plumbing material or solder manufactured before 1998 may have materials with greater than 8% lead and are at a higher risk of contributing lead to the drinking water than materials manufactured after 1998. In addition, buildings built and plumbing materials manufactured after 2014 were required to have less than 0.25% lead by weight and have the lowest risk for contributing lead to the drinking water. It should be noted however that, although prohibited, some use of leaded solder or leaded components may have occurred after the prohibitions became effective.



- PVC distribution line
- Transit distribution line
- Service Lines copper pipe w/solder
- Not on PWS / individual well
- Vacant lot / no water service
- PVC service line

SOUTH "LINE" NE QR. SECTION 11
 N.E. QR. SEC. 11
 T-21, R-18

Vol. 20 Page 127 "A"
 Vol. Page "B"

COUNTRY SIDE ALLOT.
 BLOCK "A", "B"
 MADISON TWP. ALLOTMT. 125

SE Cor. NE
 Qr. Sect. 11