



## **Water Distribution System**

The City of Barberton Water Distribution System consists of approximately 130 miles of water lines, 4 water storage tanks, 4 water pumping stations, 1655 fire hydrants, 2256 valves, and 1 water treatment plant that serves approximately 11,500 connections which includes 29,000 customers. The majority of the water is obtained from the 670 million gallon, 200 acre City owned Wolf Creek Reservoir; however, water can also be obtained from three City owned wells that have a combined capacity of 4.5 million gallons per day. The capacity of the Water Treatment Plant is 8 million gallons per day while the present daily consumption is approximately 4.3 million gallons per day.

Distribution customer types vary by class. The City of Barberton identifies customers using a classification system which ranges from Class 1 to Class 4:

- Class 1 – Residential (91%)
- Class 2 – Commercial (7.5%)
- Class 3 – Industrial (.5)
- Class 4 – Schools/Churches (1%)

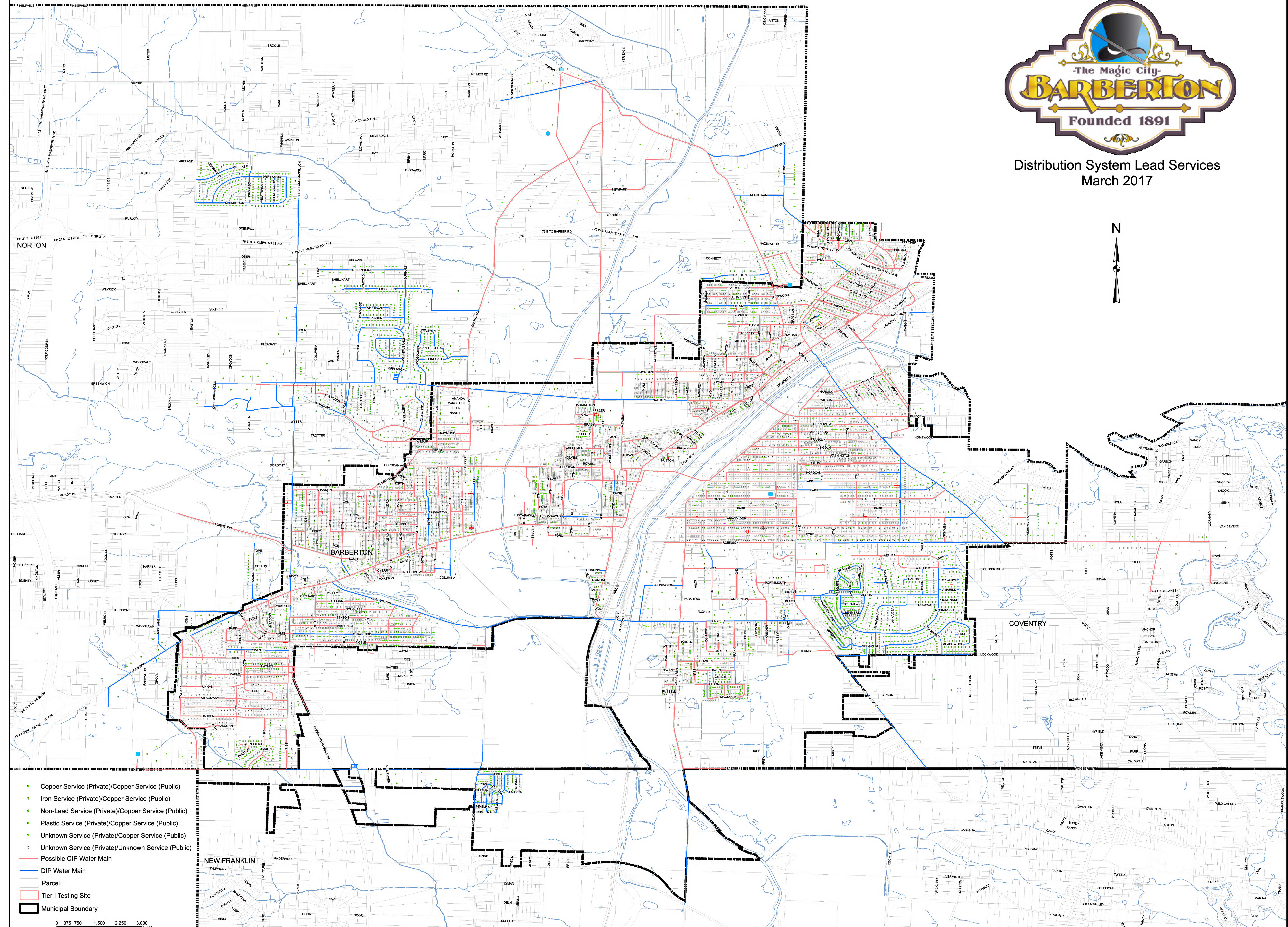
The Water Distribution system is maintained by approximately 21 employees who are regularly scheduled Monday through Friday 7:30am to 4:00pm and 1 employee from 12:30pm to 9:00pm. One employee is on call 24 hours a day, 7 days a week for immediate emergency response.

Buildings in Ohio built prior to 1998 or that use plumbing material or solder manufactured before 1998 may have materials with greater than 8% lead and are at a higher risk of contributing lead to the drinking water than materials manufactured after 1998. In addition, buildings built and plumbing materials manufactured after 2014 were required to have less than 0.25% lead by weight and have the lowest risk for contributing lead to the drinking water. It should be noted however that, although prohibited, some use of leaded solder or leaded components may have occurred after the prohibitions became effective.





Distribution System Lead Services  
March 2017



- Copper Service (Private)/Copper Service (Public)
- Iron Service (Private)/Copper Service (Public)
- Non-Lead Service (Private)/Copper Service (Public)
- Plastic Service (Private)/Copper Service (Public)
- Unknown Service (Private)/Copper Service (Public)
- Unknown Service (Private)/Unknown Service (Public)
- Possible CIP Water Main
- DIP Water Main
- ▭ Parcel
- ▭ Tier I Testing Site
- ▭ Municipal Boundary

0 375 750 1,500 2,250 3,000 Feet