



February 28, 2017

Ohio EPA Northeast District Office
Division of Drinking Water and Ground Waters
Chris Maslo, Environmental Specialist
2110 East Aurora Road
Twinsburg, Ohio 44087

RE: Lead Line Mapping in Distribution Systems for the State Line Mobile Home Park

Dear Mr. Maslo,

Per Section House Bill 512, Section 6109.121 of the Ohio Revised Code, the State Line Mobile Home Park (State Line MHP) is submitting this report letter and a map of the water system.

The State Line MHP was built in 1953 and has the potential of occupying 88 trailers. The Mobile Home Park also has an office building and a house with a maintenance garage, where the on lot maintenance worker lives. There are two wells at the trailer park that supplies the water after inline treatment is added. The distribution lines consist of 1 ½ inch high-density polyethylene (HDPE) pipe and the water services are copper tubing.

Since the water distribution pipes are HDPE and the services are copper, the State Line MHP is not expected to have any lead piping in the water system.

In addition to the mapping, a list of Tier I sampling locations was sent to Mr. Michael Deal of Ohio EPA by the January 15, 2017 dead line.

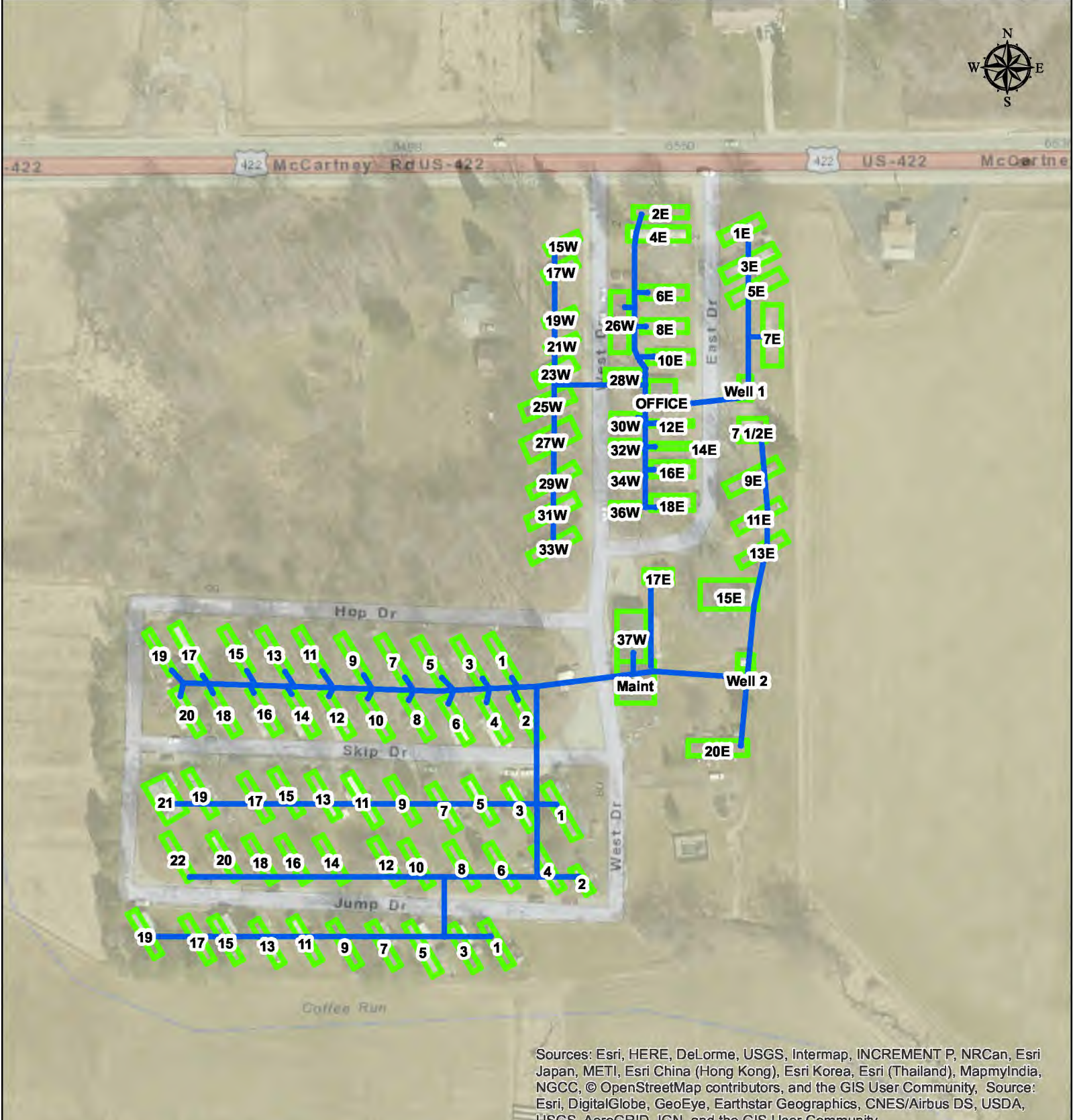
Sincerely,

Lee Benson

Enclosures (2): Lead Line Map & Tier I Sampling Sites

Cc: Ohio Department of Health

Ohio Department of Job and Family Services



Sources: Esri, HERE, DeLorme, USGS, Intermap, INCREMENT P, NRCan, Esri Japan, METI, Esri China (Hong Kong), Esri Korea, Esri (Thailand), MapmyIndia, NGCC, © OpenStreetMap contributors, and the GIS User Community, Source: Esri, DigitalGlobe, GeoEye, Earthstar Geographics, CNES/Airbus DS, USDA, USGS, AeroGRID, IGN, and the GIS User Community

- Legend**
- 1 1/2- inch HDPE Water Main
 - Building or Trailer

STATE LINE MOBILE HOME PARK WATER SYSTEM LEAD SERVICE LINE MAP

1 inch = 200 feet

MARCH 2017

