

The information provided by the City of Niles Water Department represents the current understanding regarding public side lead service lines and/or possibility public side of lead service lines connected to the water distribution system.

NOTE:

Lead is not naturally present in the water leaving the treatment plant. It is the result of corrosion of materials in contact with the water, predominantly in the customer's home plumbing. Shortening the time the water sits in contact with the plumbing reduces the chances for lead in water. The responsibility of the composition of the customer's home plumbing is under the jurisdiction of the State of Ohio Department of Commerce.

High lead solder was banned in Ohio in 1998, and lead containing fixtures were banned in 2014. Homes built prior to 2014 are likely to contain some amount of lead in their fixtures, solder, or the customer's (private) side of the service line.

Since the beginning of lead sampling in 1993, the City of Niles has been in compliance with USEPA & Ohio EPA Lead and Copper rule.

GREEN LINE: Represents areas where there are non-lead service lines (no lead).

YELLOW LINE: Represents where there have been and may still be lead pigtails and or service lines

BLUE PINS: Represent lead sample points.

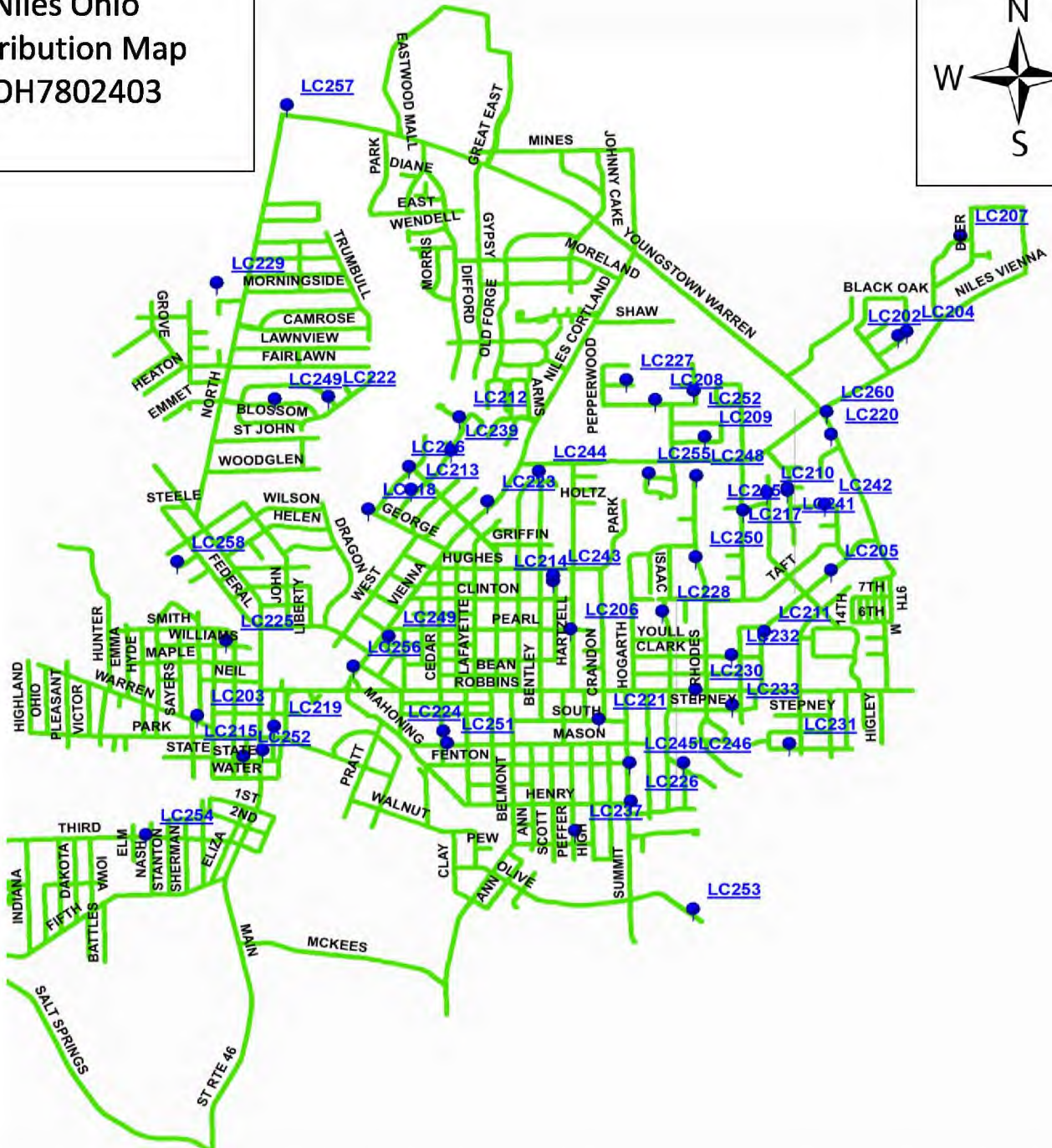
Reference by: Brian Paridon – Water Distribution Forman, City of Niles
 Andy Catanzarite – Water & Wastewater Superintendent, City of Niles

Revised By: Curtis L. Truss Jr. OTCO Executive Director, May 23, 2017.

Entity: _____
 Doc Type: Report
 Doc Subtype: Lead Mapping
 Program: _____
 County: _____
 Secondary ID: OH7802403

*add to the Doc 587322
 revision date 5/23/17*

City of Niles Ohio
 Water Distribution Map
 PWS ID: OH7802403



The information provided by the City of Niles Water Department represents the current understanding regarding public side lead service lines and/or possibility public side of lead service lines connected to the water distribution system.

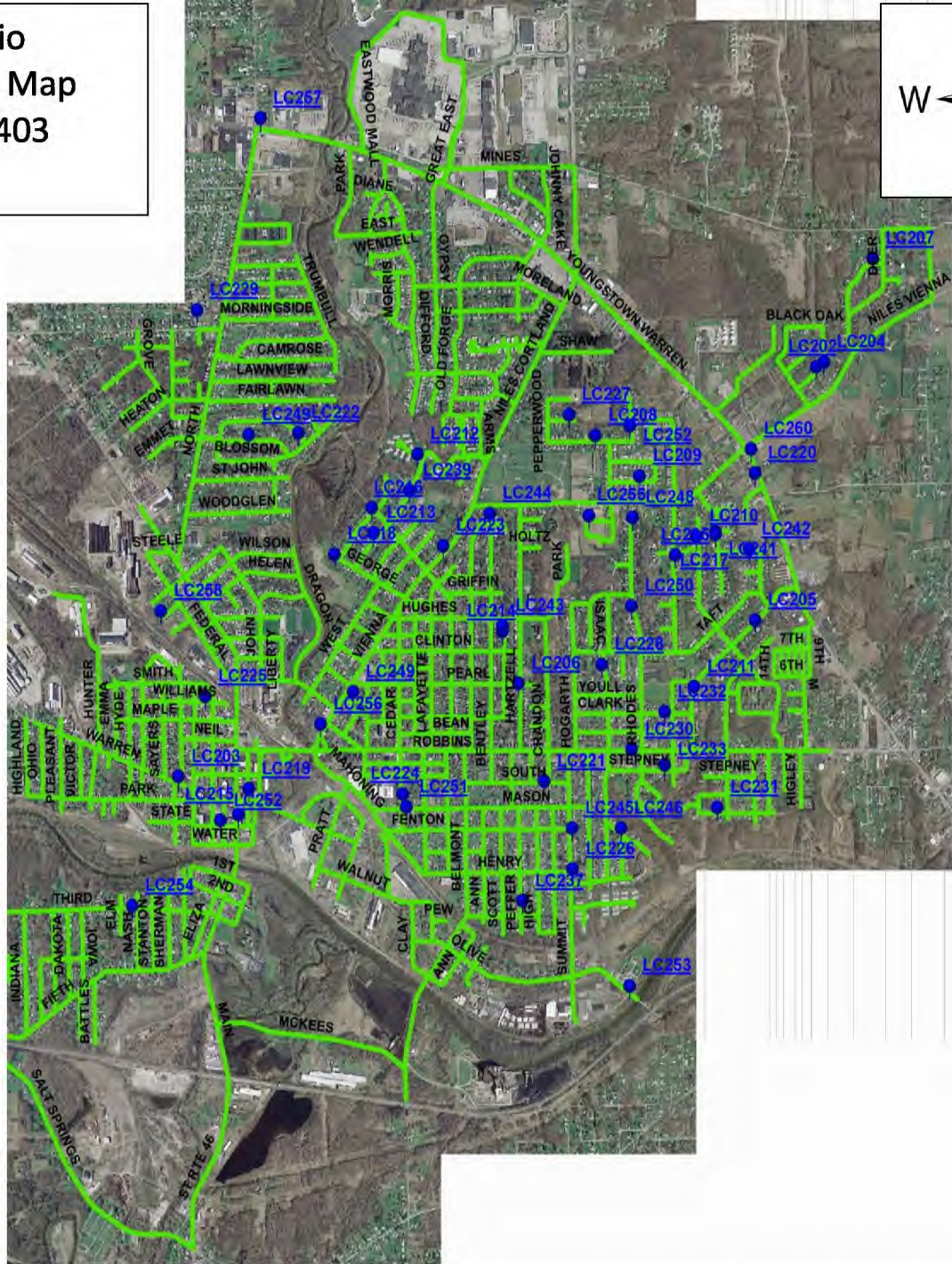
NOTE:
 Lead is not naturally present in the water leaving the treatment plant. It is the result of corrosion of materials in contact with the water, predominantly in the customer's home plumbing. Shortening the time the water sits in contact with the plumbing reduces the chances for lead in water. The responsibility of the composition of the customer's home plumbing is under the jurisdiction of the State of Ohio Department of Commerce.
 High lead solder was banned in Ohio in 1998, and lead containing fixtures were banned in 2014. Homes built prior to 2014 are likely to contain some amount of lead in their fixtures, solder, or the customer's (private) side of the service line.
 Since the beginning of lead sampling in 1993, the City of Niles has been in compliance with USEPA & Ohio EPA Lead and Copper rule.

GREEN LINE: Represents areas where there are non-lead service lines (no lead).
 BLUE PINS: Represent lead sample points.

Reference by: Brian Paridon – Water Distribution Forman, City of Niles
 Andy Catanrarite – Water & Wastewater Superintendent, City of Niles

Created By: Curtis L. Truss Jr. OTCO Executive Director, March 7, 2017.

City of Niles Ohio
 Water Distribution Map
 PWS ID: OH7802403



The information provided by the City of Niles Water Department represents the current understanding regarding public side lead service lines and/or possibility public side of lead service lines connected to the water distribution system.

NOTE:
 Lead is not naturally present in the water leaving the treatment plant. It is the result of corrosion of materials in contact with the water, predominantly in the customer's home plumbing. Shortening the time the water sits in contact with the plumbing reduces the chances for lead in water. The responsibility of the composition of the customer's home plumbing is under the jurisdiction of the State of Ohio Department of Commerce.
 High lead solder was banned in Ohio in 1998, and lead containing fixtures were banned in 2014. Homes built prior to 2014 are likely to contain some amount of lead in their fixtures, solder, or the customer's (private) side of the service line.
 Since the beginning of lead sampling in 1993, the City of Niles has been in compliance with USEPA & Ohio EPA Lead and Copper rule.

GREEN LINE: Represents areas where there are non-lead service lines (no lead).
 BLUE PINS: Represent lead sample points.

Reference by: Brian Paridon – Water Distribution Forman, City of Niles
 Andy Catanrarite – Water & Wastewater Superintendent, City of Niles

Created By: Curtis L. Truss Jr. OTCO Executive Director, March 7, 2017.