

March 6, 2017

Ms. Rebecca Werner
Ohio EPA District Office
2110 E. Aurora Road
Twinsburg, Ohio 44087

Re: Guidelines for Lead Mapping in Distribution Systems

Dear Ms. Werner:

Please find attached the following information for Hexpol Compounding. The compounding site was established in 1951.

- Google Map of the facility ** Note no information is available
- Facility Drawing - Twinsburg Office
- Sampling locations schedule / 2017 Distribution Schedule

Should you have any further questions, please do not hesitate to contact me at 440-834-5538.

Sincerely,



Steve Groff
Maintenance Manager

Cc: Ohio Department of Health
Ohio Department of Job & Family Services

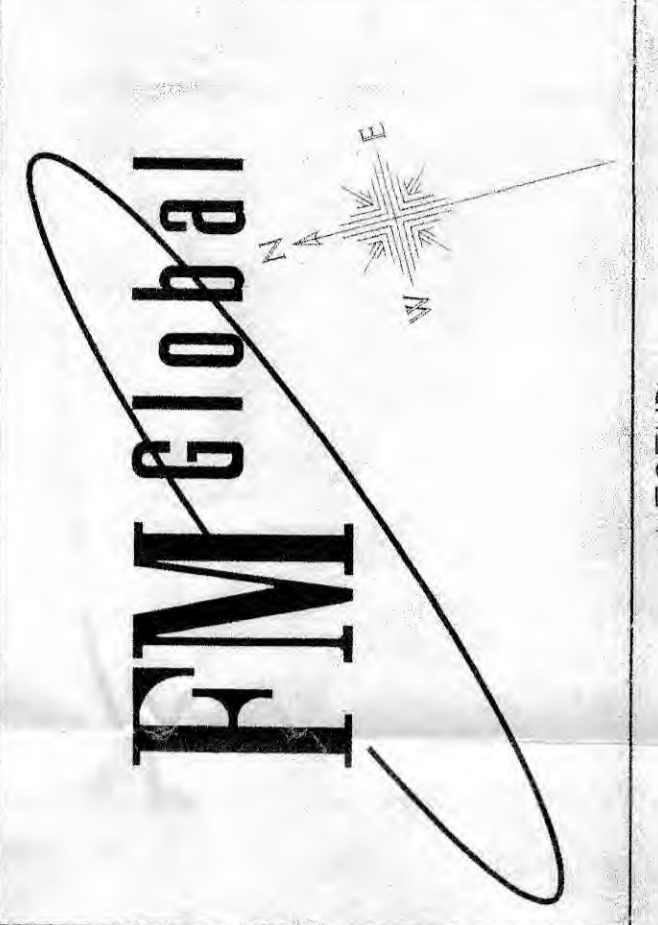
Entity: Hexpol
Doc Type: Report
Doc Subtype: _____
Program: DDA&W
County: Crawford
Secondary ID: OH 2830412

RECEIVED

MAR 08 2017

OHIO EPA NEDO

OH 2830412



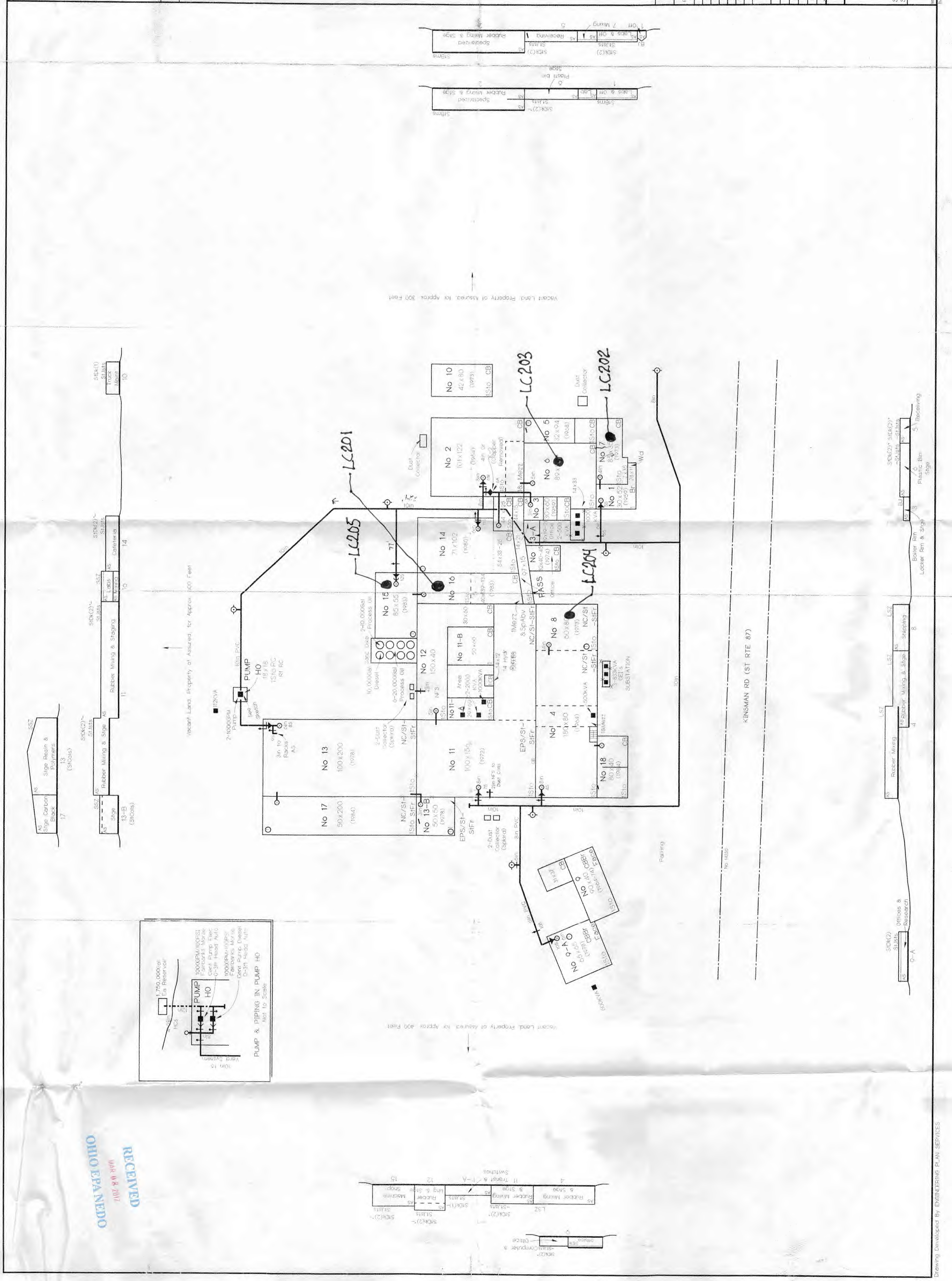
LEGEND

- This is a fire alarm pull station. The number indicates the location of the pull station.
- This is a fire alarm control panel. The number indicates the location of the panel.
- This is a fire alarm bell. The number indicates the location of the bell.
- This is a fire alarm horn. The number indicates the location of the horn.
- This is a fire alarm strobe. The number indicates the location of the strobe.
- This is a fire alarm siren. The number indicates the location of the siren.
- This is a fire alarm speaker. The number indicates the location of the speaker.
- This is a fire alarm horn and strobe. The number indicates the location of the horn and strobe.
- This is a fire alarm siren and strobe. The number indicates the location of the siren and strobe.
- This is a fire alarm speaker and strobe. The number indicates the location of the speaker and strobe.
- This is a fire alarm horn, strobe, and siren. The number indicates the location of the horn, strobe, and siren.
- This is a fire alarm speaker, strobe, and siren. The number indicates the location of the speaker, strobe, and siren.
- This is a fire alarm horn, strobe, siren, and speaker. The number indicates the location of the horn, strobe, siren, and speaker.
- This is a fire alarm horn, strobe, siren, and speaker with bell. The number indicates the location of the horn, strobe, siren, and speaker with bell.
- This is a fire alarm horn, strobe, siren, and speaker with bell and strobe. The number indicates the location of the horn, strobe, siren, and speaker with bell and strobe.
- This is a fire alarm horn, strobe, siren, and speaker with bell and strobe and speaker. The number indicates the location of the horn, strobe, siren, and speaker with bell and strobe and speaker.
- This is a fire alarm horn, strobe, siren, and speaker with bell and strobe and speaker and bell. The number indicates the location of the horn, strobe, siren, and speaker with bell and strobe and speaker and bell.
- This is a fire alarm horn, strobe, siren, and speaker with bell and strobe and speaker and bell and strobe. The number indicates the location of the horn, strobe, siren, and speaker with bell and strobe and speaker and bell and strobe.
- This is a fire alarm horn, strobe, siren, and speaker with bell and strobe and speaker and bell and strobe and speaker. The number indicates the location of the horn, strobe, siren, and speaker with bell and strobe and speaker and bell and strobe and speaker.
- This is a fire alarm horn, strobe, siren, and speaker with bell and strobe and speaker and bell and strobe and speaker and bell. The number indicates the location of the horn, strobe, siren, and speaker with bell and strobe and speaker and bell and strobe and speaker and bell.
- This is a fire alarm horn, strobe, siren, and speaker with bell and strobe and speaker and bell and strobe and speaker and bell and strobe. The number indicates the location of the horn, strobe, siren, and speaker with bell and strobe and speaker and bell and strobe and speaker and bell and strobe.
- This is a fire alarm horn, strobe, siren, and speaker with bell and strobe and speaker and bell and strobe and speaker and bell and strobe and speaker. The number indicates the location of the horn, strobe, siren, and speaker with bell and strobe and speaker and bell and strobe and speaker and bell and strobe and speaker.

SPRINKLER SYSTEM DATA

| NO. | TYPE | LOCATION | DATE | BY | REVISIONS |
|-----|------|----------|------|-----|-----------|
| 1 | 1 | 1 | 1 | 1 | 1 |
| 2 | 2 | 2 | 2 | 2 | 2 |
| 3 | 3 | 3 | 3 | 3 | 3 |
| 4 | 4 | 4 | 4 | 4 | 4 |
| 5 | 5 | 5 | 5 | 5 | 5 |
| 6 | 6 | 6 | 6 | 6 | 6 |
| 7 | 7 | 7 | 7 | 7 | 7 |
| 8 | 8 | 8 | 8 | 8 | 8 |
| 9 | 9 | 9 | 9 | 9 | 9 |
| 10 | 10 | 10 | 10 | 10 | 10 |
| 11 | 11 | 11 | 11 | 11 | 11 |
| 12 | 12 | 12 | 12 | 12 | 12 |
| 13 | 13 | 13 | 13 | 13 | 13 |
| 14 | 14 | 14 | 14 | 14 | 14 |
| 15 | 15 | 15 | 15 | 15 | 15 |
| 16 | 16 | 16 | 16 | 16 | 16 |
| 17 | 17 | 17 | 17 | 17 | 17 |
| 18 | 18 | 18 | 18 | 18 | 18 |
| 19 | 19 | 19 | 19 | 19 | 19 |
| 20 | 20 | 20 | 20 | 20 | 20 |
| 21 | 21 | 21 | 21 | 21 | 21 |
| 22 | 22 | 22 | 22 | 22 | 22 |
| 23 | 23 | 23 | 23 | 23 | 23 |
| 24 | 24 | 24 | 24 | 24 | 24 |
| 25 | 25 | 25 | 25 | 25 | 25 |
| 26 | 26 | 26 | 26 | 26 | 26 |
| 27 | 27 | 27 | 27 | 27 | 27 |
| 28 | 28 | 28 | 28 | 28 | 28 |
| 29 | 29 | 29 | 29 | 29 | 29 |
| 30 | 30 | 30 | 30 | 30 | 30 |
| 31 | 31 | 31 | 31 | 31 | 31 |
| 32 | 32 | 32 | 32 | 32 | 32 |
| 33 | 33 | 33 | 33 | 33 | 33 |
| 34 | 34 | 34 | 34 | 34 | 34 |
| 35 | 35 | 35 | 35 | 35 | 35 |
| 36 | 36 | 36 | 36 | 36 | 36 |
| 37 | 37 | 37 | 37 | 37 | 37 |
| 38 | 38 | 38 | 38 | 38 | 38 |
| 39 | 39 | 39 | 39 | 39 | 39 |
| 40 | 40 | 40 | 40 | 40 | 40 |
| 41 | 41 | 41 | 41 | 41 | 41 |
| 42 | 42 | 42 | 42 | 42 | 42 |
| 43 | 43 | 43 | 43 | 43 | 43 |
| 44 | 44 | 44 | 44 | 44 | 44 |
| 45 | 45 | 45 | 45 | 45 | 45 |
| 46 | 46 | 46 | 46 | 46 | 46 |
| 47 | 47 | 47 | 47 | 47 | 47 |
| 48 | 48 | 48 | 48 | 48 | 48 |
| 49 | 49 | 49 | 49 | 49 | 49 |
| 50 | 50 | 50 | 50 | 50 | 50 |
| 51 | 51 | 51 | 51 | 51 | 51 |
| 52 | 52 | 52 | 52 | 52 | 52 |
| 53 | 53 | 53 | 53 | 53 | 53 |
| 54 | 54 | 54 | 54 | 54 | 54 |
| 55 | 55 | 55 | 55 | 55 | 55 |
| 56 | 56 | 56 | 56 | 56 | 56 |
| 57 | 57 | 57 | 57 | 57 | 57 |
| 58 | 58 | 58 | 58 | 58 | 58 |
| 59 | 59 | 59 | 59 | 59 | 59 |
| 60 | 60 | 60 | 60 | 60 | 60 |
| 61 | 61 | 61 | 61 | 61 | 61 |
| 62 | 62 | 62 | 62 | 62 | 62 |
| 63 | 63 | 63 | 63 | 63 | 63 |
| 64 | 64 | 64 | 64 | 64 | 64 |
| 65 | 65 | 65 | 65 | 65 | 65 |
| 66 | 66 | 66 | 66 | 66 | 66 |
| 67 | 67 | 67 | 67 | 67 | 67 |
| 68 | 68 | 68 | 68 | 68 | 68 |
| 69 | 69 | 69 | 69 | 69 | 69 |
| 70 | 70 | 70 | 70 | 70 | 70 |
| 71 | 71 | 71 | 71 | 71 | 71 |
| 72 | 72 | 72 | 72 | 72 | 72 |
| 73 | 73 | 73 | 73 | 73 | 73 |
| 74 | 74 | 74 | 74 | 74 | 74 |
| 75 | 75 | 75 | 75 | 75 | 75 |
| 76 | 76 | 76 | 76 | 76 | 76 |
| 77 | 77 | 77 | 77 | 77 | 77 |
| 78 | 78 | 78 | 78 | 78 | 78 |
| 79 | 79 | 79 | 79 | 79 | 79 |
| 80 | 80 | 80 | 80 | 80 | 80 |
| 81 | 81 | 81 | 81 | 81 | 81 |
| 82 | 82 | 82 | 82 | 82 | 82 |
| 83 | 83 | 83 | 83 | 83 | 83 |
| 84 | 84 | 84 | 84 | 84 | 84 |
| 85 | 85 | 85 | 85 | 85 | 85 |
| 86 | 86 | 86 | 86 | 86 | 86 |
| 87 | 87 | 87 | 87 | 87 | 87 |
| 88 | 88 | 88 | 88 | 88 | 88 |
| 89 | 89 | 89 | 89 | 89 | 89 |
| 90 | 90 | 90 | 90 | 90 | 90 |
| 91 | 91 | 91 | 91 | 91 | 91 |
| 92 | 92 | 92 | 92 | 92 | 92 |
| 93 | 93 | 93 | 93 | 93 | 93 |
| 94 | 94 | 94 | 94 | 94 | 94 |
| 95 | 95 | 95 | 95 | 95 | 95 |
| 96 | 96 | 96 | 96 | 96 | 96 |
| 97 | 97 | 97 | 97 | 97 | 97 |
| 98 | 98 | 98 | 98 | 98 | 98 |
| 99 | 99 | 99 | 99 | 99 | 99 |
| 100 | 100 | 100 | 100 | 100 | 100 |

M. A. HANNA COMPANY, et al.
 "HANNA RUBBER COMPOUNDING"
 Sketch from D. L. Mincer, Scoles, Inc. 6001
 September 20, 1984. PROJECT ASSOCIATION: Mr. J.E. Mertz
 Factory Mutual System
 INDEX 48862.51 1/1



RECEIVED
 OHIO EVANEDO
 APR 18 1991