

CITY OF STREETSBORO

WATER DISTRIBUTION MAP

LEAD MAPPING



Buildings in Ohio built prior to 1998 or that use plumbing material or solder manufactured before 1998 may have materials with greater than 8% lead and are at a higher risk of contributing lead to the drinking water than materials manufactured after 1998. In addition, buildings built and plumbing materials manufactured after 2014 were required to have less than 0.25% lead by weight and have the lowest risk for contributing lead to the drinking water. It should be noted however that, although prohibited, some use of leaded solder or leaded components may have occurred after the prohibitions became effective.

Legend

Lead Service Lines

Lead/Non-Lead

- Non-Lead
- Lead
- No Information

P Private (Residential/Commercial)

PW Public Water System

The City of Streetsboro Established a Water Supply District in 1971. Codified Ordinance 925.01 (Ord. 1971-21. Passed 6-7-71.)

Only non-lead material are to be used for service and supply lines. The yellow dots indicating lead on the map indicate there is a possibility that the building may contain lead solder and or lead fixtures based on the year it was built.

For additional information on the effects of lead and lead related information, please visit the Portage County Health Department web site at: <https://www.co.portage.oh.us/PCHD/>

For additional information on the City of Streetsboro Codified Ordinances and other information, please visit the City of Streetsboro web site at:

<http://www.cityofstreetsboro.com/>

0 0.075 0.15 0.3 Miles

A1



© OpenStreetMap (and) contributors, CC-BY-SA

CITY OF STREETSBORO

WATER DISTRIBUTION MAP

LEAD MAPPING

Legend

Lead Service Lines

Lead/Non-Lead

- Non-Lead
- Lead
- No Information

P Private (Residential/Commercial)

PW Public Water System

The City of Streetsboro Established a Water Supply District in 1971. Codified Ordinance 925.01 (Ord. 1971-21. Passed 6-7-71.)

Only non-lead material are to be used for service and supply lines. The yellow dots indicating lead on the map indicate there is a possibility that the building may contain lead solder and or lead fixtures based on the year it was built.

For additional information on the effects of lead and lead related information, please visit the Portage County Health Department web site at: <https://www.co.portage.oh.us/PCHD/>

For additional information on the City of Streetsboro Codified Ordinances and other information, please visit the City of Streetsboro web site at:

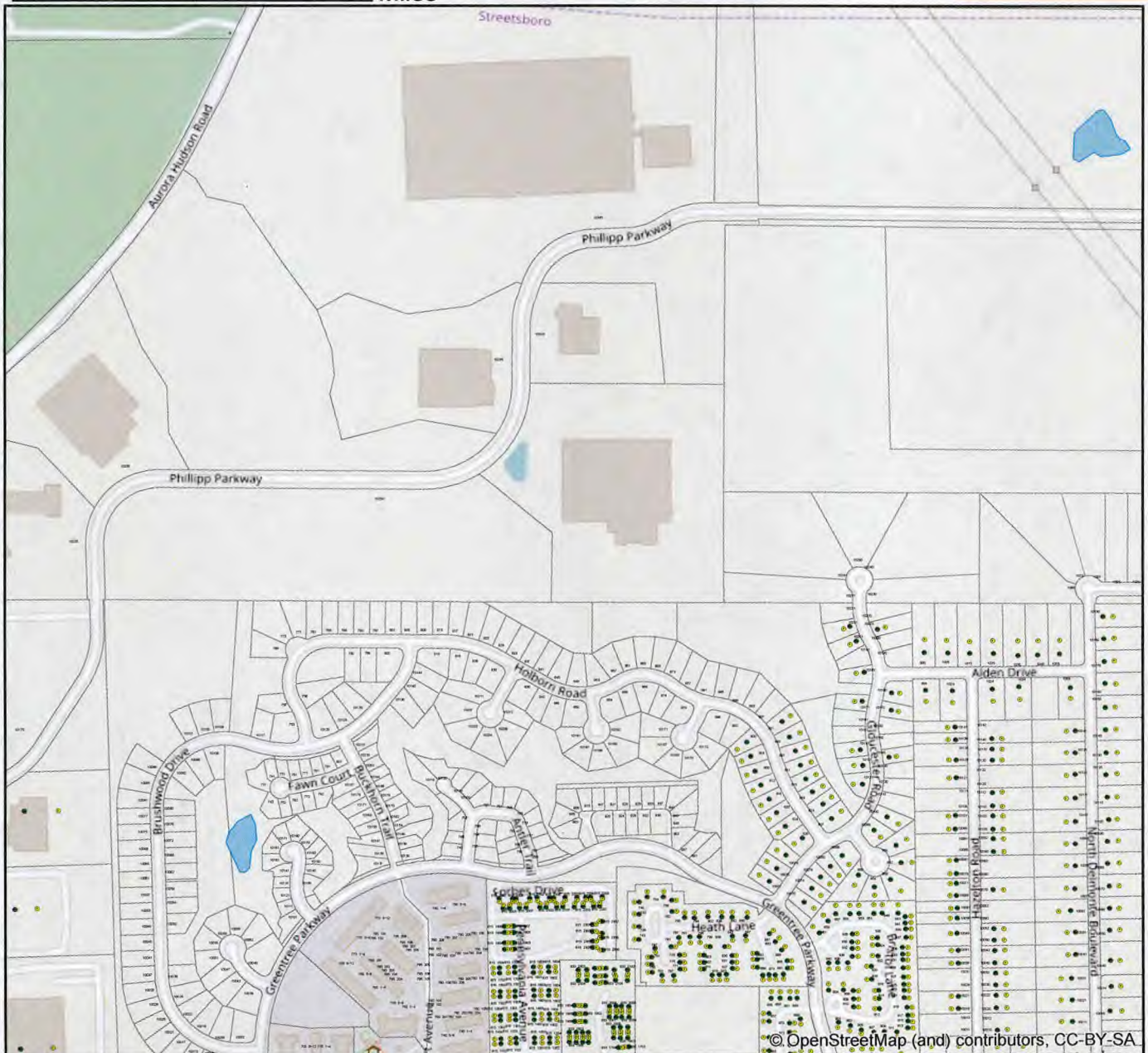
<http://www.cityofstreetsboro.com/>



Buildings in Ohio built prior to 1998 or that use plumbing material or solder manufactured before 1998 may have materials with greater than 8% lead and are at a higher risk of contributing lead to the drinking water than materials manufactured after 1998. In addition, buildings built and plumbing materials manufactured after 2014 were required to have less than 0.25% lead by weight and have the lowest risk of contributing lead to the drinking water. It should be noted however that, although prohibited, some use of leaded solder or leaded components may have occurred after the prohibitions became effective.

0 0.075 0.15 0.3 Miles

A2



© OpenStreetMap (and) contributors, CC-BY-SA

CITY OF STREETSBORO

WATER DISTRIBUTION MAP

LEAD MAPPING



Buildings in Ohio built prior to 1998 or that use plumbing material or solder manufactured before 1998 may have materials with greater than 8% lead and are at a higher risk of contributing lead to the drinking water than materials manufactured after 1998. In addition, buildings built and plumbing materials manufactured after 2014 were required to have less than 0.25% lead by weight and have the lowest risk for contributing lead to the drinking water. It should be noted however that, although prohibited, some use of leaded solder or leaded components may have occurred after the prohibitions became effective.

Legend

Lead Service Lines

Lead/Non-Lead

- Non-Lead
- Lead
- No Information

P Private (Residential/Commercial)

PW Public Water System

The City of Streetsboro Established a Water Supply District in 1971. Codified Ordinance 925.01 (Ord. 1971-21. Passed 6-7-71.)

Only non-lead material are to be used for service and supply lines. The yellow dots indicating lead on the map indicate there is a possibility that the building may contain lead solder and or lead fixtures based on the year it was built.

For additional information on the effects of lead and lead related information, please visit the Portage County Health Department web site at: <https://www.co.portage.oh.us/PCHD/>

For additional information on the City of Streetsboro Codified Ordinances and other information, please visit the City of Streetsboro web site at:

<http://www.cityofstreetsboro.com/>

0 0.075 0.15 0.3 Miles

A3



© OpenStreetMap (and) contributors, CC-BY-SA

CITY OF STREETSBORO

WATER DISTRIBUTION MAP

LEAD MAPPING



Buildings in Ohio built prior to 1998 or that use plumbing material or solder manufactured before 1998 may have materials with greater than 8% lead and are at a higher risk of contributing lead to the drinking water than materials manufactured after 1998. In addition, buildings built and plumbing materials manufactured after 2014 were required to have less than 0.25% lead by weight and have the lowest risk for contributing lead to the drinking water. It should be noted however that, although prohibited, some use of leaded solder or leaded components may have occurred after the prohibitions became effective.

Legend

Lead Service Lines

Lead/Non-Lead

- Non-Lead
- Lead
- No Information

P Private (Residential/Commercial)

PW Public Water System

The City of Streetsboro Established a Water Supply District in 1971. Codified Ordinance 925.01 (Ord. 1971-21. Passed 6-7-71.)

Only non-lead material are to be used for service and supply lines. The yellow dots indicating lead on the map indicate there is a possibility that the building may contain lead solder and or lead fixtures based on the year it was built.

For additional information on the effects of lead and lead related information, please visit the Portage County Health Department web site at: <https://www.co.portage.oh.us/PCHD/>

For additional information on the City of Streetsboro Codified Ordinances and other information, please visit the City of Streetsboro web site at:

<http://www.cityofstreetsboro.com/>

0 0.075 0.15 0.3 Miles

A4



CITY OF STREETSBORO

WATER DISTRIBUTION MAP

LEAD MAPPING



Buildings in Ohio built prior to 1998 or that use plumbing material or solder manufactured before 1998 may have materials with greater than 8% lead and are at a higher risk of contributing lead to the drinking water than materials manufactured after 1998. In addition, buildings built and plumbing materials manufactured after 2014 were required to have less than 0.25% lead by weight and have the lowest risk for contributing lead to the drinking water. It should be noted however that, although prohibited, some use of leaded solder or leaded components may have occurred after the prohibitions became effective.

Legend

Lead Service Lines

Lead/Non-Lead

- Non-Lead
- Lead
- No Information

P Private (Residential/Commercial)

PW Public Water System

The City of Streetsboro Established a Water Supply District in 1971. Codified Ordinance 925.01 (Ord. 1971-21. Passed 6-7-71.)

Only non-lead material are to be used for service and supply lines. The yellow dots indicating lead on the map indicate there is a possibility that the building may contain lead solder and or lead fixtures based on the year it was built.

For additional information on the effects of lead and lead related information, please visit the Portage County Health Department web site at: <https://www.co.portage.oh.us/PCHD/>

For additional information on the City of Streetsboro Codified Ordinances and other information, please visit the City of Streetsboro web site at:

<http://www.cityofstreetsboro.com/>

0 0.075 0.15 0.3 Miles

A5



CITY OF STREETSBORO

WATER DISTRIBUTION MAP

LEAD MAPPING



Buildings in Ohio built prior to 1998 or that use plumbing material or solder manufactured before 1998 may have materials with greater than 8% lead and are at a higher risk of contributing lead to the drinking water than materials manufactured after 1998. In addition, buildings built and plumbing materials manufactured after 2014 were required to have less than 0.25% lead by weight and have the lowest risk of contributing lead to the drinking water. It should be noted however that, although prohibited, some use of leaded solder or leaded components may have occurred after the prohibitions became effective.

Legend

Lead Service Lines

Lead/Non-Lead

- Non-Lead
- Lead
- No Information

P Private (Residential/Commercial)

PW Public Water System

The City of Streetsboro Established a Water Supply District in 1971. Codified Ordinance 925.01 (Ord. 1971-21. Passed 6-7-71.)

Only non-lead material are to be used for service and supply lines. The yellow dots indicating lead on the map indicate there is a possibility that the building may contain lead solder and or lead fixtures based on the year it was built.

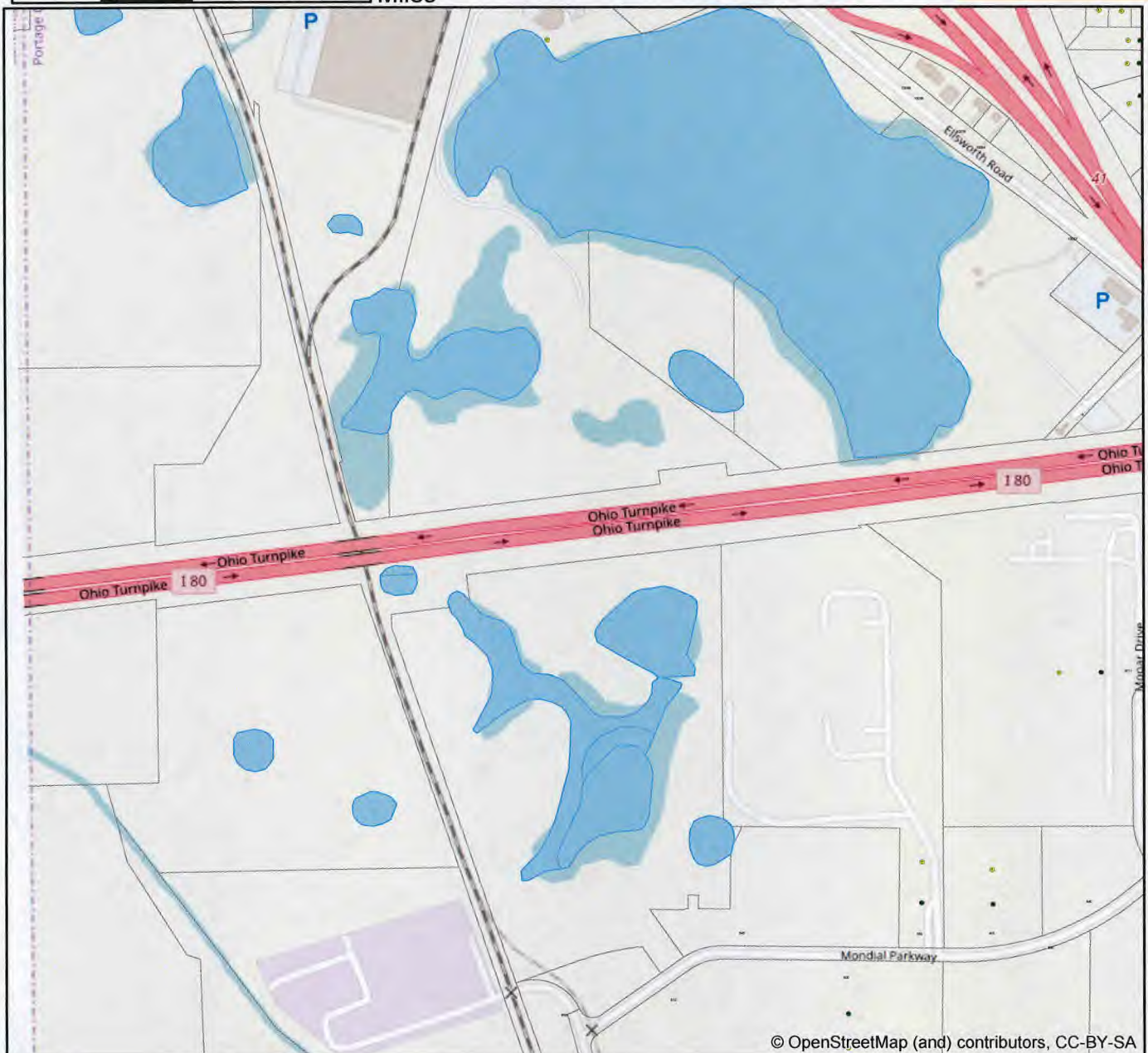
For additional information on the effects of lead and lead related information, please visit the Portage County Health Department web site at: <https://www.co.portage.oh.us/PCHD/>

For additional information on the City of Streetsboro Codified Ordinances and other information, please visit the City of Streetsboro web site at:

<http://www.cityofstreetsboro.com/>

0 0.075 0.15 0.3 Miles

B1



© OpenStreetMap (and) contributors, CC-BY-SA

CITY OF STREETSBORO

WATER DISTRIBUTION MAP

LEAD MAPPING



Buildings in Ohio built prior to 1998 or that use plumbing material or solder manufactured before 1998 may have materials with greater than 8% lead and are at a higher risk of contributing lead to the drinking water than materials manufactured after 1998. In addition, buildings built and plumbing materials manufactured after 2014 were required to have less than 0.25% lead by weight and have the lowest risk for contributing lead to the drinking water. It should be noted however that, although prohibited, some use of leaded solder or leaded components may have occurred after the prohibitions became effective.

Legend

Lead Service Lines

Lead/Non-Lead

- Non-Lead
- Lead
- No Information

P Private (Residential/Commercial)

PW Public Water System

The City of Streetsboro Established a Water Supply District in 1971. Codified Ordinance 925.01 (Ord. 1971-21. Passed 6-7-71.)

Only non-lead material are to be used for service and supply lines. The yellow dots indicating lead on the map indicate there is a possibility that the building may contain lead solder and or lead fixtures based on the year it was built.

For additional information on the effects of lead and lead related information, please visit the Portage County Health Department web site at: <https://www.co.portage.oh.us/PCHD/>

For additional information on the City of Streetsboro Codified Ordinances and other information, please visit the City of Streetsboro web site at:

<http://www.cityofstreetsboro.com/>

0 0.075 0.15 0.3 Miles

B2



© OpenStreetMap (and) contributors, CC-BY-SA

CITY OF STREETSBORO

WATER DISTRIBUTION MAP

LEAD MAPPING



Buildings in Ohio built prior to 1998 or that use plumbing material or solder manufactured before 1998 may have materials with greater than 8% lead and are at a higher risk of contributing lead to the drinking water than materials manufactured after 1998. In addition, buildings built and plumbing materials manufactured after 2014 were required to have less than 0.25% lead by weight and have the lowest risk for contributing lead to the drinking water. It should be noted however that, although prohibited, some use of leaded solder or leaded components may have occurred after the prohibitions became effective.

Legend

Lead Service Lines

Lead/Non-Lead

- Non-Lead
- Lead
- No Information

P Private (Residential/Commercial)

PW Public Water System

The City of Streetsboro Established a Water Supply District in 1971. Codified Ordinance 925.01 (Ord. 1971-21. Passed 6-7-71.)

Only non-lead material are to be used for service and supply lines. The yellow dots indicating lead on the map indicate there is a possibility that the building may contain lead solder and or lead fixtures based on the year it was built.

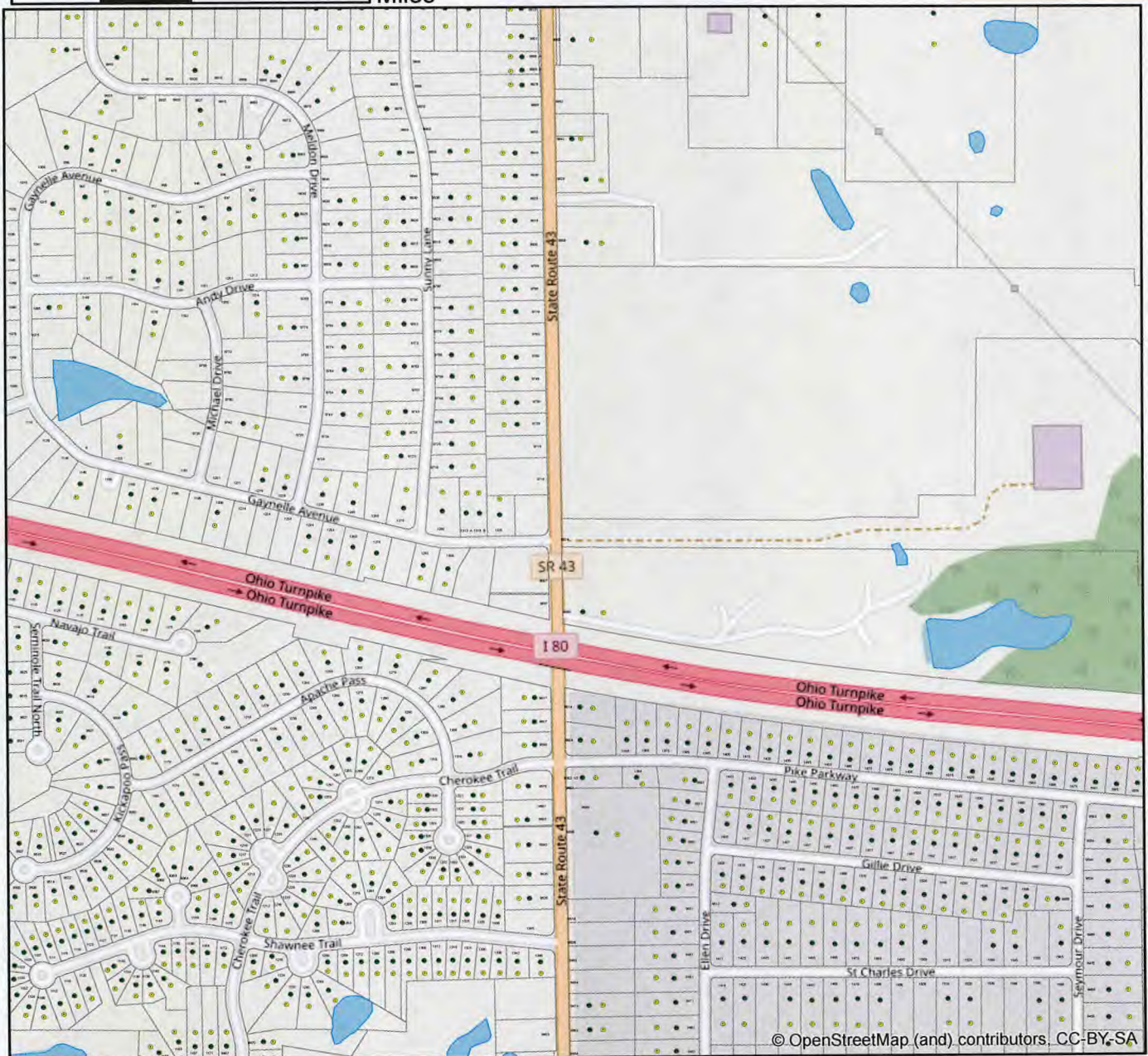
For additional information on the effects of lead and lead related information, please visit the Portage County Health Department web site at: <https://www.co.portage.oh.us/PCHD/>

For additional information on the City of Streetsboro Codified Ordinances and other information, please visit the City of Streetsboro web site at:

<http://www.cityofstreetsboro.com/>

0 0.075 0.15 0.3 Miles

B3



CITY OF STREETSBORO

WATER DISTRIBUTION MAP

LEAD MAPPING



Buildings in Ohio built prior to 1998 or that use plumbing material or solder manufactured before 1998 may have materials with greater than 8% lead and are at a higher risk of contributing lead to the drinking water than materials manufactured after 1998. In addition, buildings built and plumbing materials manufactured after 2014 were required to have less than 0.25% lead by weight and have the lowest risk for contributing lead to the drinking water. It should be noted however that, although prohibited, some use of leaded solder or leaded components may have occurred after the prohibitions became effective.

Legend

Lead Service Lines

Lead/Non-Lead

- Non-Lead
- Lead
- No Information

P Private (Residential/Commercial)

PW Public Water System

The City of Streetsboro Established a Water Supply District in 1971. Codified Ordinance 925.01 (Ord. 1971-21. Passed 6-7-71.)

Only non-lead material are to be used for service and supply lines. The yellow dots indicating lead on the map indicate there is a possibility that the building may contain lead solder and or lead fixtures based on the year it was built.

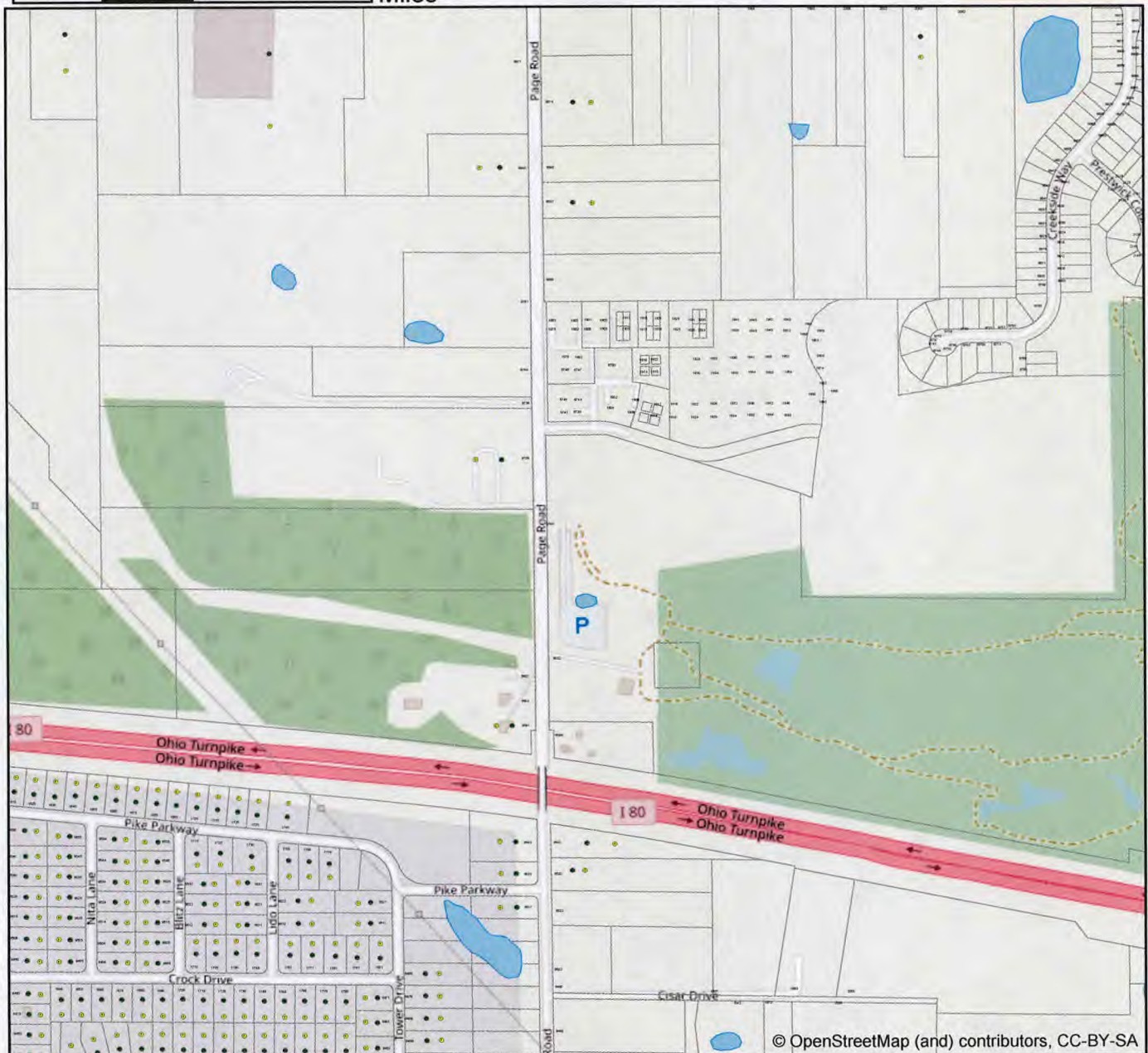
For additional information on the effects of lead and lead related information, please visit the Portage County Health Department web site at: <https://www.co.portage.oh.us/PCHD/>

For additional information on the City of Streetsboro Codified Ordinances and other information, please visit the City of Streetsboro web site at:

<http://www.cityofstreetsboro.com/>

0 0.075 0.15 0.3 Miles

B4



© OpenStreetMap (and) contributors, CC-BY-SA

CITY OF STREETSBORO

WATER DISTRIBUTION MAP

LEAD MAPPING



Buildings in Ohio built prior to 1998 or that use plumbing material or solder manufactured before 1998 may have materials with greater than 8% lead and are at a higher risk of contributing lead to the drinking water than materials manufactured after 1998. In addition, buildings built and plumbing materials manufactured after 2014 were required to have less than 0.25% lead by weight and have the lowest risk of contributing lead to the drinking water. It should be noted however that, although prohibited, some use of leaded solder or leaded components may have occurred after the prohibitions became effective.

Legend

Lead Service Lines

Lead/Non-Lead

- Non-Lead
- Lead
- No Information

P Private (Residential/Commercial)

PW Public Water System

The City of Streetsboro Established a Water Supply District in 1971. Codified Ordinance 925.01 (Ord. 1971-21. Passed 6-7-71.)

Only non-lead material are to be used for service and supply lines. The yellow dots indicating lead on the map indicate there is a possibility that the building may contain lead solder and or lead fixtures based on the year it was built.

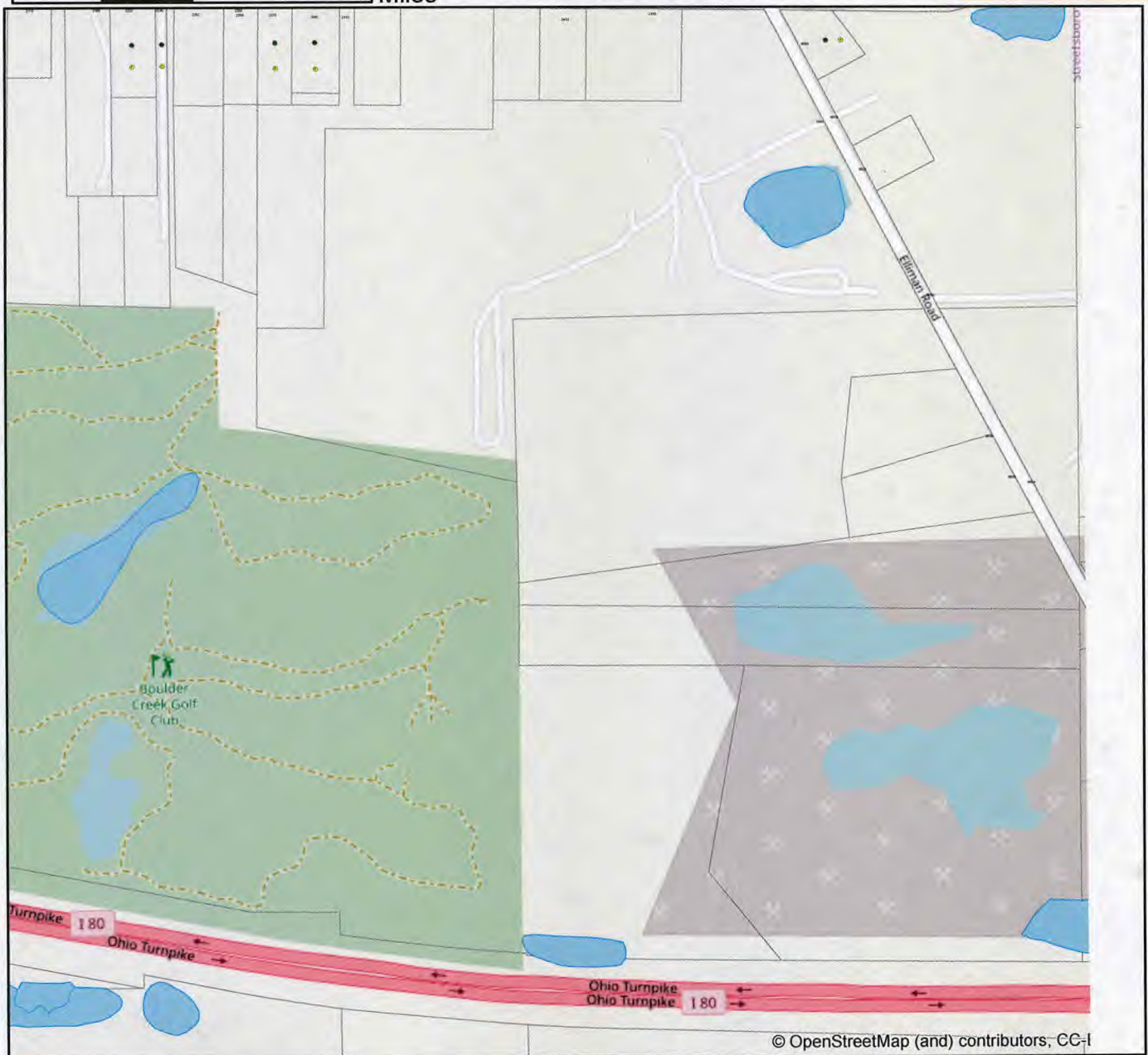
For additional information on the effects of lead and lead related information, please visit the Portage County Health Department web site at: <https://www.co.portage.oh.us/PCHD/>

For additional information on the City of Streetsboro Codified Ordinances and other information, please visit the City of Streetsboro web site at:

<http://www.cityofstreetsboro.com/>

0 0.075 0.15 0.3 Miles

B5



© OpenStreetMap (and) contributors, CC-BY

CITY OF STREETSBORO

WATER DISTRIBUTION MAP

LEAD MAPPING



Buildings in Ohio built prior to 1998 or that use plumbing material or solder manufactured before 1998 may have materials with greater than 8% lead and are at a higher risk of contributing lead to the drinking water than materials manufactured after 1998. In addition, buildings built and plumbing materials manufactured after 2014 were required to have less than 0.25% lead by weight and have the lowest risk for contributing lead to the drinking water. It should be noted however that, although prohibited, some use of leaded solder or leaded components may have occurred after the prohibitions became effective.

Legend

Lead Service Lines

Lead/Non-Lead

- Non-Lead
- Lead
- No Information

P Private (Residential/Commercial)

PW Public Water System

The City of Streetsboro Established a Water Supply District in 1971. Codified Ordinance 925.01 (Ord. 1971-21. Passed 6-7-71.)

Only non-lead material are to be used for service and supply lines. The yellow dots indicating lead on the map indicate there is a possibility that the building may contain lead solder and or lead fixtures based on the year it was built.

For additional information on the effects of lead and lead related information, please visit the Portage County Health Department web site at: <https://www.co.portage.oh.us/PCHD/>

For additional information on the City of Streetsboro Codified Ordinances and other information, please visit the City of Streetsboro web site at:

<http://www.cityofstreetsboro.com/>

0 0.075 0.15 0.3 Miles

C1



© OpenStreetMap (and) contributors, CC-BY-SA

CITY OF STREETSBORO

WATER DISTRIBUTION MAP

LEAD MAPPING



Buildings in Ohio built prior to 1998 or that use plumbing material or solder manufactured before 1998 may have materials with greater than 8% lead and are at a higher risk of contributing lead to the drinking water than materials manufactured after 1998. In addition, buildings built and plumbing materials manufactured after 2014 were required to have less than 0.25% lead by weight and have the lowest risk for contributing lead to the drinking water. It should be noted however that, although prohibited, some use of leaded solder or leaded components may have occurred after the prohibitions became effective.

Legend

Lead Service Lines

Lead/Non-Lead

- Non-Lead
- Lead
- No Information

P Private (Residential/Commercial)

PW Public Water System

The City of Streetsboro Established a Water Supply District in 1971. Codified Ordinance 925.01 (Ord. 1971-21. Passed 6-7-71.)

Only non-lead material are to be used for service and supply lines. The yellow dots indicating lead on the map indicate there is a possibility that the building may contain lead solder and or lead fixtures based on the year it was built.

For additional information on the effects of lead and lead related information, please visit the Portage County Health Department web site at: <https://www.co.portage.oh.us/PCHD/>

For additional information on the City of Streetsboro Codified Ordinances and other information, please visit the City of Streetsboro web site at:

<http://www.cityofstreetsboro.com/>

0 0.075 0.15 0.3 Miles

C2



© OpenStreetMap (and) contributors, CC-BY-SA

CITY OF STREETSBORO

WATER DISTRIBUTION MAP

LEAD MAPPING



Buildings in Ohio built prior to 1998 or that use plumbing material or solder manufactured before 1998 may have materials with greater than 8% lead and are at a higher risk of contributing lead to the drinking water than materials manufactured after 1998. In addition, buildings built and plumbing materials manufactured after 2014 were required to have less than 0.25% lead by weight and have the lowest risk for contributing lead to the drinking water. It should be noted however that, although prohibited, some use of leaded solder or leaded components may have occurred after the prohibitions became effective.

Legend

Lead Service Lines

Lead/Non-Lead

- Non-Lead
- Lead
- No Information

P Private (Residential/Commercial)

PW Public Water System

The City of Streetsboro Established a Water Supply District in 1971. Codified Ordinance 925.01 (Ord. 1971-21. Passed 6-7-71.)

Only non-lead material are to be used for service and supply lines. The yellow dots indicating lead on the map indicate there is a possibility that the building may contain lead solder and or lead fixtures based on the year it was built.

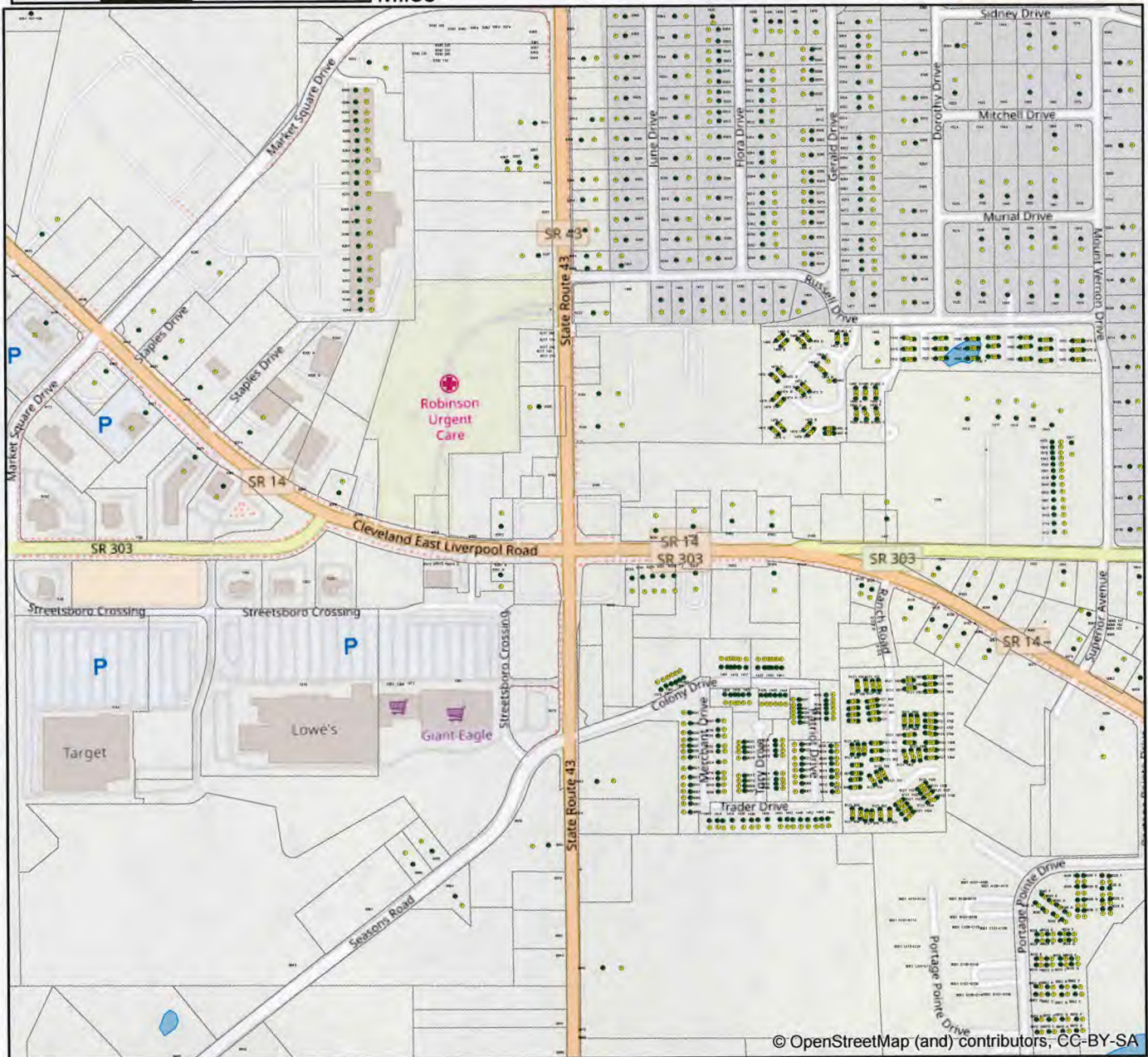
For additional information on the effects of lead and lead related information, please visit the Portage County Health Department web site at: <https://www.co.portage.oh.us/PCHD/>

For additional information on the City of Streetsboro Codified Ordinances and other information, please visit the City of Streetsboro web site at:

<http://www.cityofstreetsboro.com/>

0 0.075 0.15 0.3 Miles

C3



© OpenStreetMap (and) contributors, CC-BY-SA

CITY OF STREETSBORO

WATER DISTRIBUTION MAP

LEAD MAPPING



Buildings in Ohio built prior to 1998 or that use plumbing material or solder manufactured before 1998 may have materials with greater than 8% lead and are at a higher risk of contributing lead to the drinking water than materials manufactured after 1998. In addition, buildings built and plumbing materials manufactured after 2014 were required to have less than 0.25% lead by weight and have the lowest risk for contributing lead to the drinking water. It should be noted however that, although prohibited, some use of leaded solder or leaded components may have occurred after the prohibitions became effective.

Legend

Lead Service Lines

Lead/Non-Lead

- Non-Lead
- Lead
- No Information

P Private (Residential/Commercial)

PW Public Water System

The City of Streetsboro Established a Water Supply District in 1971. Codified Ordinance 925.01 (Ord. 1971-21. Passed 6-7-71.)

Only non-lead material are to be used for service and supply lines. The yellow dots indicating lead on the map indicate there is a possibility that the building may contain lead solder and or lead fixtures based on the year it was built.

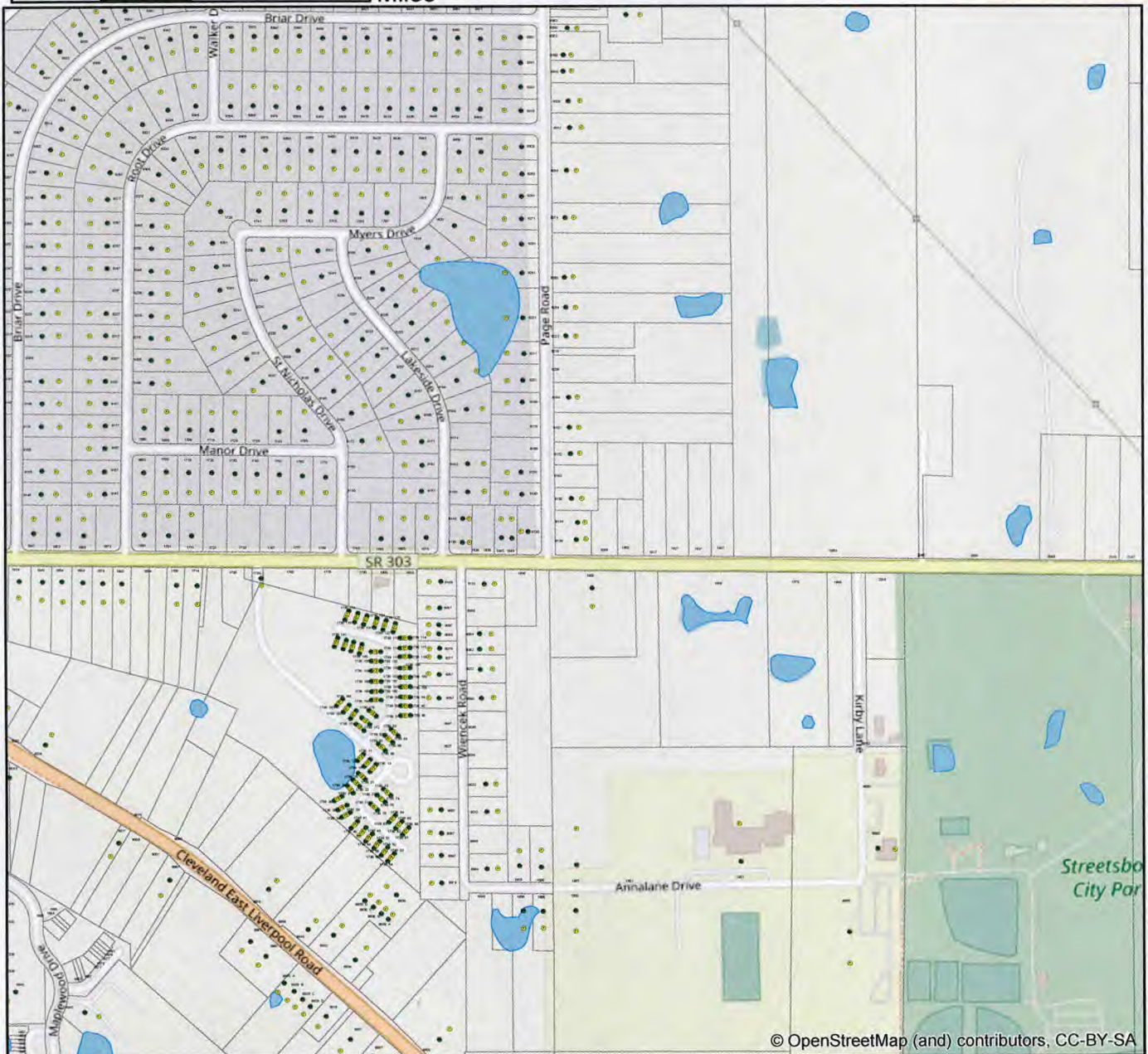
For additional information on the effects of lead and lead related information, please visit the Portage County Health Department web site at: <https://www.co.portage.oh.us/PCHD/>

For additional information on the City of Streetsboro Codified Ordinances and other information, please visit the City of Streetsboro web site at:

<http://www.cityofstreetsboro.com/>

0 0.075 0.15 0.3 Miles

C4



CITY OF STREETSBORO

WATER DISTRIBUTION MAP

LEAD MAPPING

Legend

Lead Service Lines

Lead/Non-Lead

- Non-Lead
- Lead
- No Information

P Private (Residential/Commercial)

PW Public Water System

The City of Streetsboro Established a Water Supply District in 1971. Codified Ordinance 925.01 (Ord. 1971-21. Passed 6-7-71.)

Only non-lead material are to be used for service and supply lines. The yellow dots indicating lead on the map indicate there is a possibility that the building may contain lead solder and or lead fixtures based on the year it was built.

For additional information on the effects of lead and lead related information, please visit the Portage County Health Department web site at: <https://www.co.portage.oh.us/PCHD/>

For additional information on the City of Streetsboro Codified Ordinances and other information, please visit the City of Streetsboro web site at:

<http://www.cityofstreetsboro.com/>



Buildings in Ohio built prior to 1998 or that use plumbing material or solder manufactured before 1998 may have materials with greater than 8% lead and are at a higher risk of contributing lead to the drinking water than materials manufactured after 1998. In addition, buildings built and plumbing materials manufactured after 2014 were required to have less than 0.25% lead by weight and have the lowest risk for contributing lead to the drinking water. It should be noted however that, although prohibited, some use of leaded solder or leaded components may have occurred after the prohibitions became effective.

0 0.075 0.15 0.3 Miles

C5



© OpenStreetMap (and) contributors, CC-BY

CITY OF STREETSBORO

WATER DISTRIBUTION MAP

LEAD MAPPING



Buildings in Ohio built prior to 1998 or that use plumbing material or solder manufactured before 1998 may have materials with greater than 8% lead and are at a higher risk of contributing lead to the drinking water than materials manufactured after 1998. In addition, buildings built and plumbing materials manufactured after 2014 were required to have less than 0.25% lead by weight and have the lowest risk for contributing lead to the drinking water. It should be noted however that, although prohibited, some use of leaded solder or leaded components may have occurred after the prohibitions became effective.

Legend

Lead Service Lines

Lead/Non-Lead

- Non-Lead
- Lead
- No Information

P Private (Residential/Commercial)

PW Public Water System

The City of Streetsboro Established a Water Supply District in 1971. Codified Ordinance 925.01 (Ord. 1971-21. Passed 6-7-71.)

Only non-lead material are to be used for service and supply lines. The yellow dots indicating lead on the map indicate there is a possibility that the building may contain lead solder and or lead fixtures based on the year it was built.

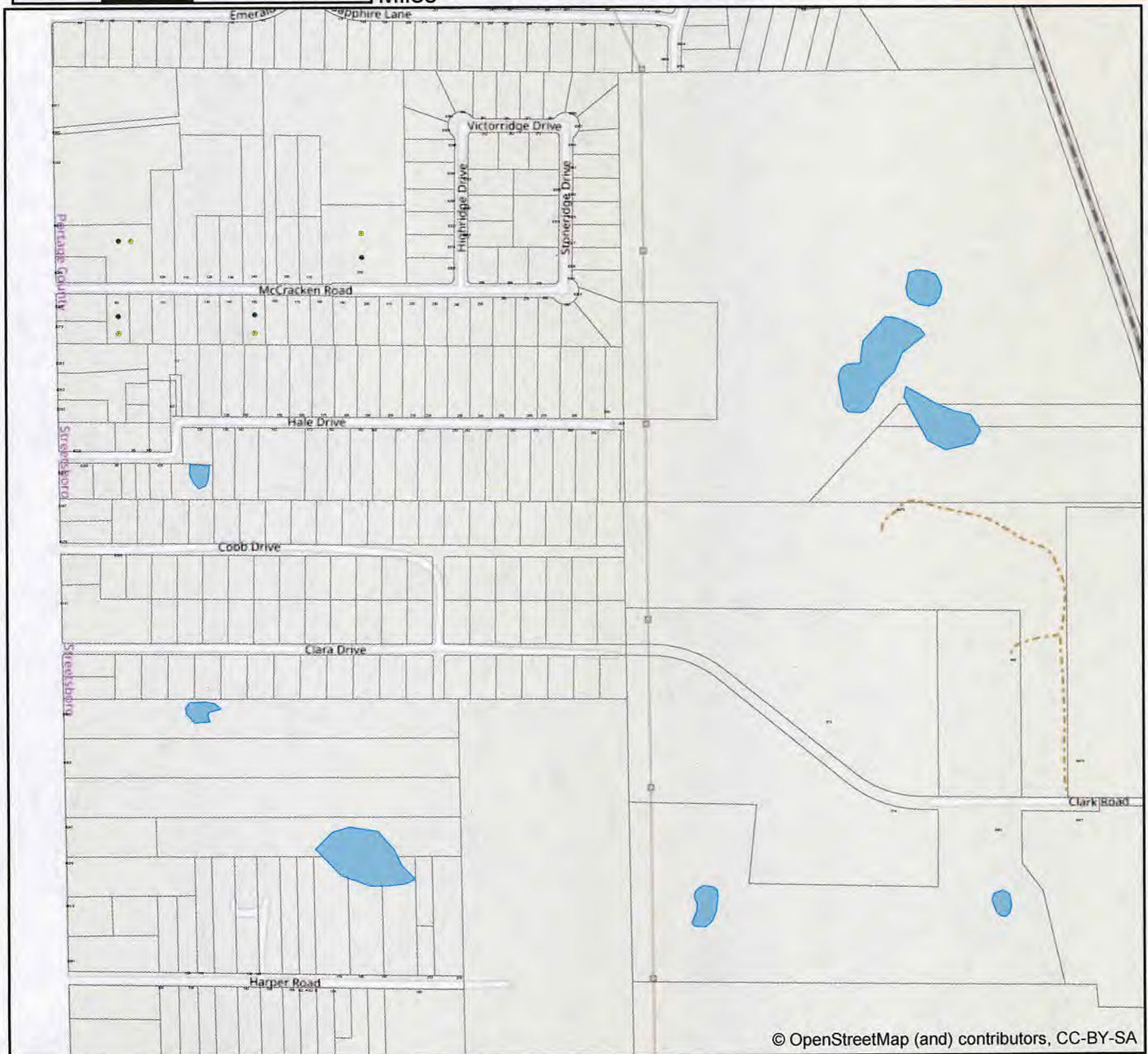
For additional information on the effects of lead and lead related information, please visit the Portage County Health Department web site at: <https://www.co.portage.oh.us/PCHD/>

For additional information on the City of Streetsboro Codified Ordinances and other information, please visit the City of Streetsboro web site at:

<http://www.cityofstreetsboro.com/>

0 0.075 0.15 0.3 Miles

D1



© OpenStreetMap (and) contributors, CC-BY-SA

CITY OF STREETSBORO

WATER DISTRIBUTION MAP

LEAD MAPPING



Buildings in Ohio built prior to 1998 or that use plumbing material or solder manufactured before 1998 may have materials with greater than 8% lead and are at a higher risk of contributing lead to the drinking water than materials manufactured after 1998. In addition, buildings built and plumbing materials manufactured after 2014 were required to have less than 0.25% lead by weight and have the lowest risk of contributing lead to the drinking water. It should be noted however that, although prohibited, some use of leaded solder or leaded components may have occurred after the prohibitions became effective.

Legend

Lead Service Lines

Lead/Non-Lead

- Non-Lead
- Lead
- No Information

P Private (Residential/Commercial)

PW Public Water System

The City of Streetsboro Established a Water Supply District in 1971. Codified Ordinance 925.01 (Ord. 1971-21. Passed 6-7-71.)

Only non-lead material are to be used for service and supply lines. The yellow dots indicating lead on the map indicate there is a possibility that the building may contain lead solder and or lead fixtures based on the year it was built.

For additional information on the effects of lead and lead related information, please visit the Portage County Health Department web site at: <https://www.co.portage.oh.us/PCHD/>

For additional information on the City of Streetsboro Codified Ordinances and other information, please visit the City of Streetsboro web site at:

<http://www.cityofstreetsboro.com/>

0 0.075 0.15 0.3 Miles

D2



© OpenStreetMap (and) contributors, CC-BY-SA

CITY OF STREETSBORO

WATER DISTRIBUTION MAP

LEAD MAPPING



Buildings in Ohio built prior to 1998 or that use plumbing material or solder manufactured before 1998 may have materials with greater than 8% lead and are at a higher risk of contributing lead to the drinking water than materials manufactured after 1998. In addition, buildings built and plumbing materials manufactured after 2014 were required to have less than 0.25% lead by weight and have the lowest risk for contributing lead to the drinking water. It should be noted however that, although prohibited, some use of leaded solder or leaded components may have occurred after the prohibitions became effective.

Legend

Lead Service Lines

Lead/Non-Lead

- Non-Lead
- Lead
- = No Information

P Private (Residential/Commercial)

PW Public Water System

The City of Streetsboro Established a Water Supply District in 1971. Codified Ordinance 925.01 (Ord. 1971-21. Passed 6-7-71.)

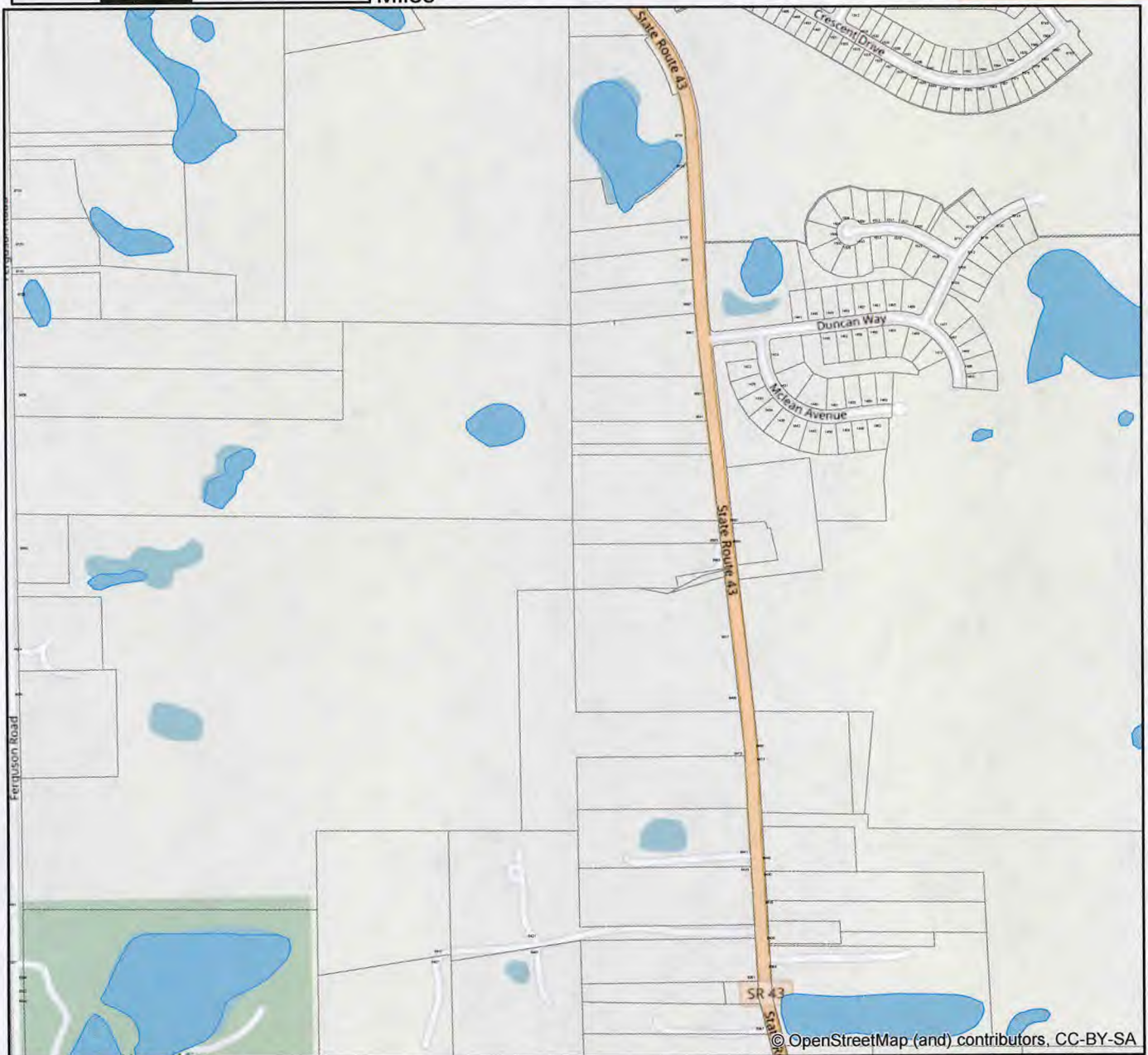
Only non-lead material are to be used for service and supply lines. The yellow dots indicating lead on the map indicate there is a possibility that the building may contain lead solder and or lead fixtures based on the year it was built.

For additional information on the effects of lead and lead related information, please visit the Portage County Health Department web site at: <https://www.co.portage.oh.us/PCHD/>

For additional information on the City of Streetsboro Codified Ordinances and other information, please visit the City of Streetsboro web site at: <http://www.cityofstreetsboro.com/>

0 0.075 0.15 0.3 Miles

D3



CITY OF STREETSBORO

WATER DISTRIBUTION MAP

LEAD MAPPING

Legend

Lead Service Lines

Lead/Non-Lead

- Non-Lead
- Lead
- No Information

P Private (Residential/Commercial)

PW Public Water System

The City of Streetsboro Established a Water Supply District in 1971. Codified Ordinance 925.01 (Ord. 1971-21. Passed 6-7-71.)

Only non-lead material are to be used for service and supply lines. The yellow dots indicating lead on the map indicate there is a possibility that the building may contain lead solder and or lead fixtures based on the year it was built.

For additional information on the effects of lead and lead related information, please visit the Portage County Health Department web site at: <https://www.co.portage.oh.us/PCHD/>

For additional information on the City of Streetsboro Codified Ordinances and other information, please visit the City of Streetsboro web site at:

<http://www.cityofstreetsboro.com/>



Buildings in Ohio built prior to 1998 or that use plumbing material or solder manufactured before 1998 may have materials with greater than 8% lead and are at a higher risk of contributing lead to the drinking water than materials manufactured after 1998. In addition, buildings built and plumbing materials manufactured after 2014 were required to have less than 0.25% lead by weight and have the lowest risk for contributing lead to the drinking water. It should be noted however that, although prohibited, some use of leaded solder or leaded components may have occurred after the prohibitions became effective.

0 0.075 0.15 0.3 Miles

D4



© OpenStreetMap (and) contributors, CC-BY-SA

CITY OF STREETSBORO

WATER DISTRIBUTION MAP

LEAD MAPPING



Buildings in Ohio built prior to 1998 or that use plumbing material or solder manufactured before 1998 may have materials with greater than 8% lead and are at a higher risk of contributing lead to the drinking water than materials manufactured after 1998. In addition, buildings built and plumbing materials manufactured after 2014 were required to have less than 0.25% lead by weight and have the lowest risk of contributing lead to the drinking water. It should be noted however that, although prohibited, some use of leaded solder or leaded components may have occurred after the prohibitions became effective.

Legend

Lead Service Lines

Lead/Non-Lead

- Non-Lead
- Lead
- No Information

P Private (Residential/Commercial)

PW Public Water System

The City of Streetsboro Established a Water Supply District in 1971. Codified Ordinance 925.01 (Ord. 1971-21. Passed 6-7-71.)

Only non-lead material are to be used for service and supply lines. The yellow dots indicating lead on the map indicate there is a possibility that the building may contain lead solder and or lead fixtures based on the year it was built.

For additional information on the effects of lead and lead related information, please visit the Portage County Health Department web site at: <https://www.co.portage.oh.us/PCHD/>

For additional information on the City of Streetsboro Codified Ordinances and other information, please visit the City of Streetsboro web site at:

<http://www.cityofstreetsboro.com/>

0 0.075 0.15 0.3 Miles

D5



© OpenStreetMap (and) contributors, CC-BY

CITY OF STREETSBORO

WATER DISTRIBUTION MAP

LEAD MAPPING



Buildings in Ohio built prior to 1998 or that use plumbing material or solder manufactured before 1998 may have materials with greater than 8% lead and are at a higher risk of contributing lead to the drinking water than materials manufactured after 1998. In addition, buildings built and plumbing materials manufactured after 2014 were required to have less than 0.25% lead by weight and have the lowest risk for contributing lead to the drinking water. It should be noted however that, although prohibited, some use of leaded solder or leaded components may have occurred after the prohibitions became effective.

Legend

Lead Service Lines

Lead/Non-Lead

- Non-Lead
- Lead
- No Information

P Private (Residential/Commercial)

PW Public Water System

The City of Streetsboro Established a Water Supply District in 1971. Codified Ordinance 925.01 (Ord. 1971-21. Passed 6-7-71.)

Only non-lead material are to be used for service and supply lines. The yellow dots indicating lead on the map indicate there is a possibility that the building may contain lead solder and or lead fixtures based on the year it was built.

For additional information on the effects of lead and lead related information, please visit the Portage County Health Department web site at: <https://www.co.portage.oh.us/PCHD/>

For additional information on the City of Streetsboro Codified Ordinances and other information, please visit the City of Streetsboro web site at:

<http://www.cityofstreetsboro.com/>

0 0.075 0.15 0.3 Miles

E1



© OpenStreetMap (and) contributors, CC-BY-SA

CITY OF STREETSBORO

WATER DISTRIBUTION MAP

LEAD MAPPING



Buildings in Ohio built prior to 1998 or that use plumbing material or solder manufactured before 1998 may have materials with greater than 8% lead and are at a higher risk of contributing lead to the drinking water than materials manufactured after 1998. In addition, buildings built and plumbing materials manufactured after 2014 were required to have less than 0.25% lead by weight and have the lowest risk for contributing lead to the drinking water. It should be noted however that, although prohibited, some use of leaded solder or leaded components may have occurred after the prohibitions became effective.

Legend

Lead Service Lines

Lead/Non-Lead

- Non-Lead
- Lead
- No Information

P Private (Residential/Commercial)

PW Public Water System

The City of Streetsboro Established a Water Supply District in 1971. Codified Ordinance 925.01 (Ord. 1971-21. Passed 6-7-71.)

Only non-lead material are to be used for service and supply lines. The yellow dots indicating lead on the map indicate there is a possibility that the building may contain lead solder and or lead fixtures based on the year it was built.

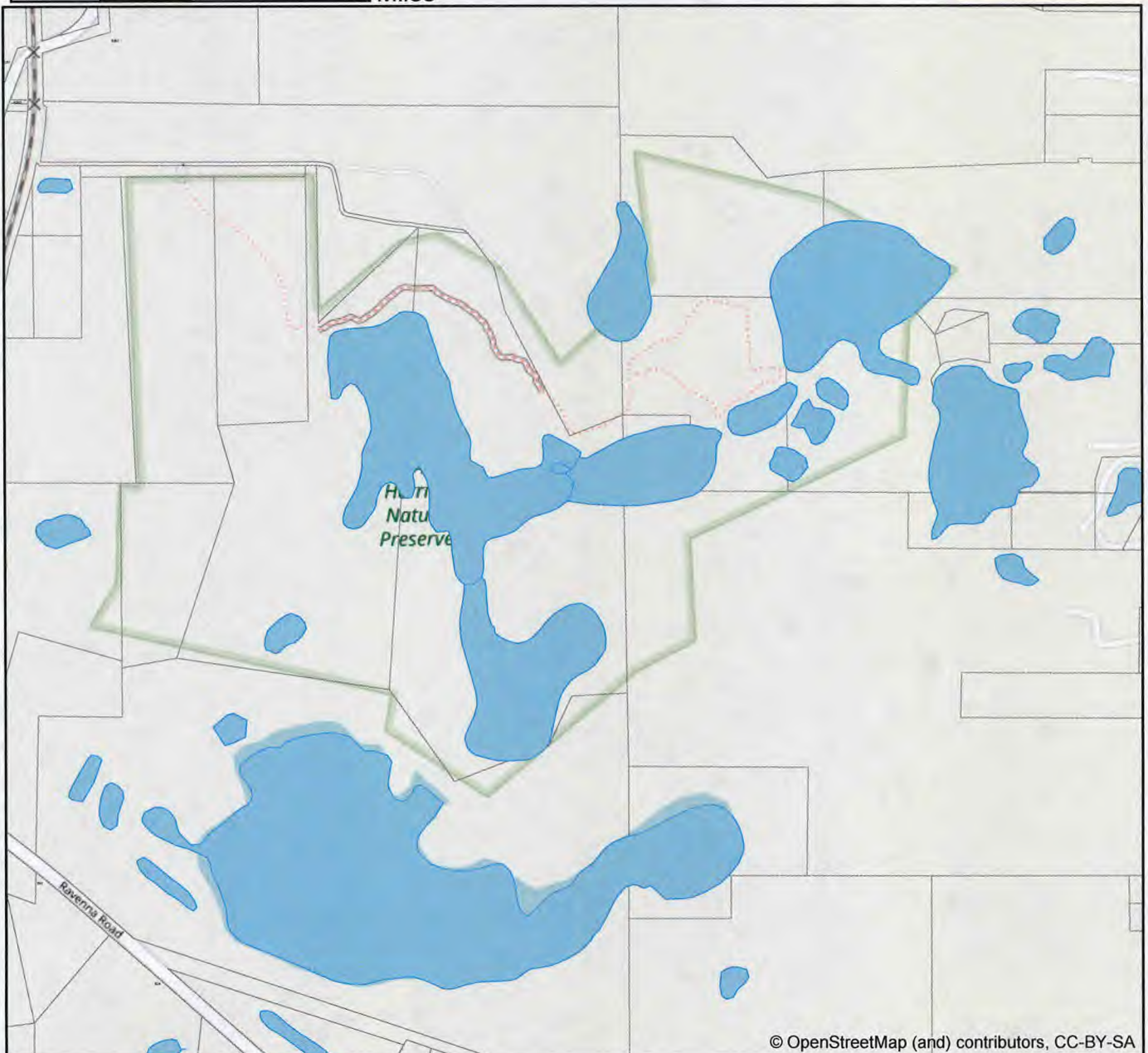
For additional information on the effects of lead and lead related information, please visit the Portage County Health Department web site at: <https://www.co.portage.oh.us/PCHD/>

For additional information on the City of Streetsboro Codified Ordinances and other information, please visit the City of Streetsboro web site at:

<http://www.cityofstreetsboro.com/>

0 0.075 0.15 0.3 Miles

E2



© OpenStreetMap (and) contributors, CC-BY-SA

CITY OF STREETSBORO

WATER DISTRIBUTION MAP

LEAD MAPPING



Buildings in Ohio built prior to 1998 or that use plumbing material or solder manufactured before 1998 may have materials with greater than 8% lead and are at a higher risk of contributing lead to the drinking water than materials manufactured after 1998. In addition, buildings built and plumbing materials manufactured after 2014 were required to have less than 0.25% lead by weight and have the lowest risk for contributing lead to the drinking water. It should be noted however that, although prohibited, some use of leaded solder or leaded components may have occurred after the prohibitions became effective.

Legend

Lead Service Lines

Lead/Non-Lead

- Non-Lead
- Lead
- No Information

P Private (Residential/Commercial)

PW Public Water System

The City of Streetsboro Established a Water Supply District in 1971. Codified Ordinance 925.01 (Ord. 1971-21. Passed 6-7-71.)

Only non-lead material are to be used for service and supply lines. The yellow dots indicating lead on the map indicate there is a possibility that the building may contain lead solder and or lead fixtures based on the year it was built.

For additional information on the effects of lead and lead related information, please visit the Portage County Health Department web site at: <https://www.co.portage.oh.us/PCHD/>

For additional information on the City of Streetsboro Codified Ordinances and other information, please visit the City of Streetsboro web site at:

<http://www.cityofstreetsboro.com/>

0 0.075 0.15 0.3 Miles

E3



3Y-SA

CITY OF STREETSBORO

WATER DISTRIBUTION MAP

LEAD MAPPING



Buildings in Ohio built prior to 1998 or that use plumbing material or solder manufactured before 1998 may have materials with greater than 8% lead and are at a higher risk of contributing lead to the drinking water than materials manufactured after 1998. In addition, buildings built and plumbing materials manufactured after 2014 were required to have less than 0.25% lead by weight and have the lowest risk for contributing lead to the drinking water. It should be noted however that, although prohibited, some use of leaded solder or leaded components may have occurred after the prohibitions became effective.

Legend

Lead Service Lines

Lead/Non-Lead

- Non-Lead
- Lead
- No Information

P Private (Residential/Commercial)

PW Public Water System

The City of Streetsboro Established a Water Supply District in 1971. Codified Ordinance 925.01 (Ord. 1971-21. Passed 6-7-71.)

Only non-lead material are to be used for service and supply lines. The yellow dots indicating lead on the map indicate there is a possibility that the building may contain lead solder and or lead fixtures based on the year it was built.

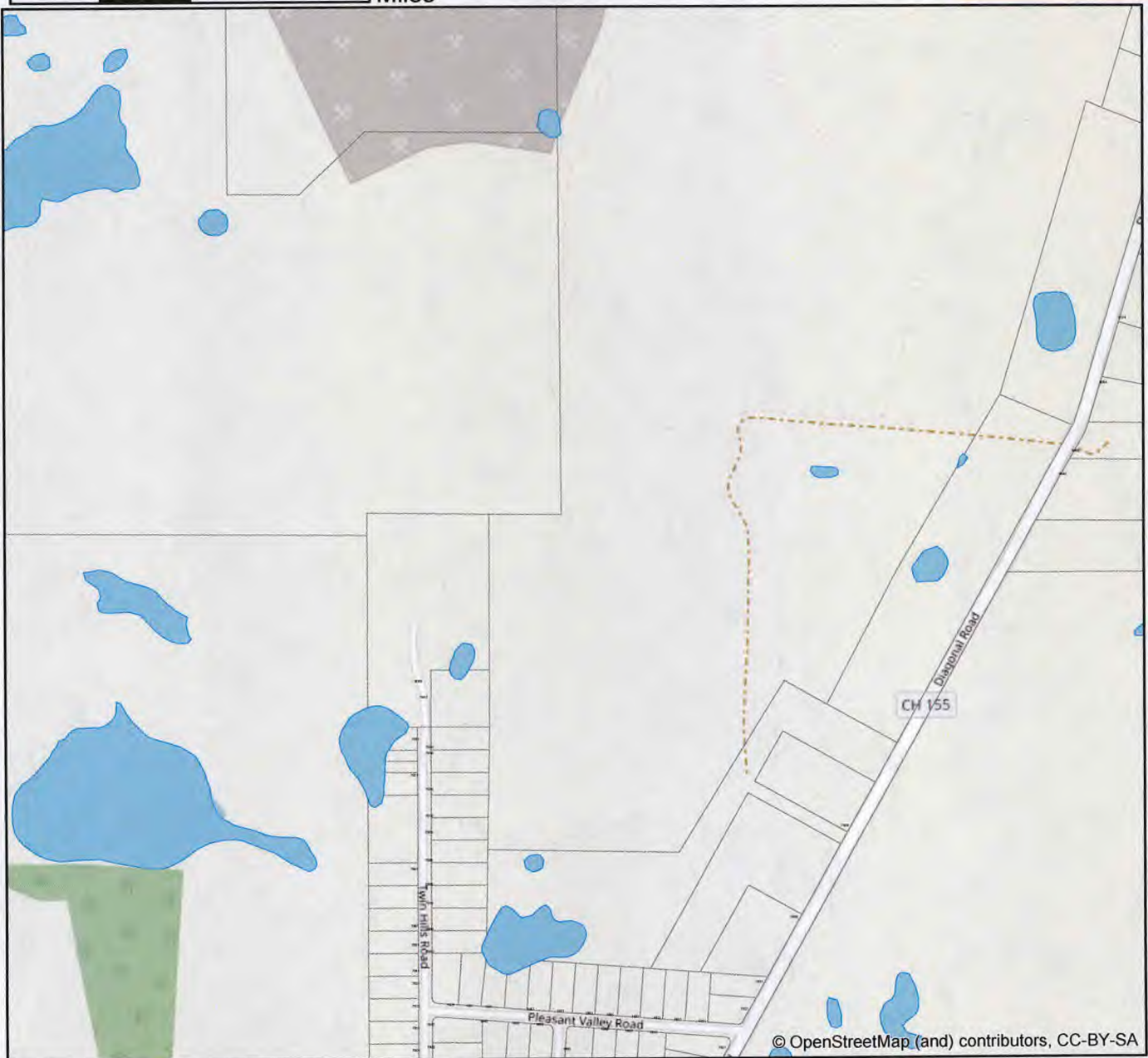
For additional information on the effects of lead and lead related information, please visit the Portage County Health Department web site at: <https://www.co.portage.oh.us/PCHD/>

For additional information on the City of Streetsboro Codified Ordinances and other information, please visit the City of Streetsboro web site at:

<http://www.cityofstreetsboro.com/>

0 0.075 0.15 0.3 Miles

E4



© OpenStreetMap (and) contributors, CC-BY-SA

CITY OF STREETSBORO

WATER DISTRIBUTION MAP

LEAD MAPPING



Buildings in Ohio built prior to 1998 or that use plumbing material or solder manufactured before 1998 may have materials with greater than 8% lead and are at a higher risk of contributing lead to the drinking water than materials manufactured after 1998. In addition, buildings built and plumbing materials manufactured after 2014 were required to have less than 0.25% lead by weight and have the lowest risk of contributing lead to the drinking water. It should be noted however that, although prohibited, some use of leaded solder or leaded components may have occurred after the prohibitions became effective.

Legend

Lead Service Lines

Lead/Non-Lead

- Non-Lead
- Lead
- No Information

P Private (Residential/Commercial)

PW Public Water System

The City of Streetsboro Established a Water Supply District in 1971. Codified Ordinance 925.01 (Ord. 1971-21. Passed 6-7-71.)

Only non-lead material are to be used for service and supply lines. The yellow dots indicating lead on the map indicate there is a possibility that the building may contain lead solder and or lead fixtures based on the year it was built.

For additional information on the effects of lead and lead related information, please visit the Portage County Health Department web site at: <https://www.co.portage.oh.us/PCHD/>

For additional information on the City of Streetsboro Codified Ordinances and other information, please visit the City of Streetsboro web site at:

<http://www.cityofstreetsboro.com/>

0 0.075 0.15 0.3 Miles

E5



© OpenStreetMap (and) contributors, CC-BY